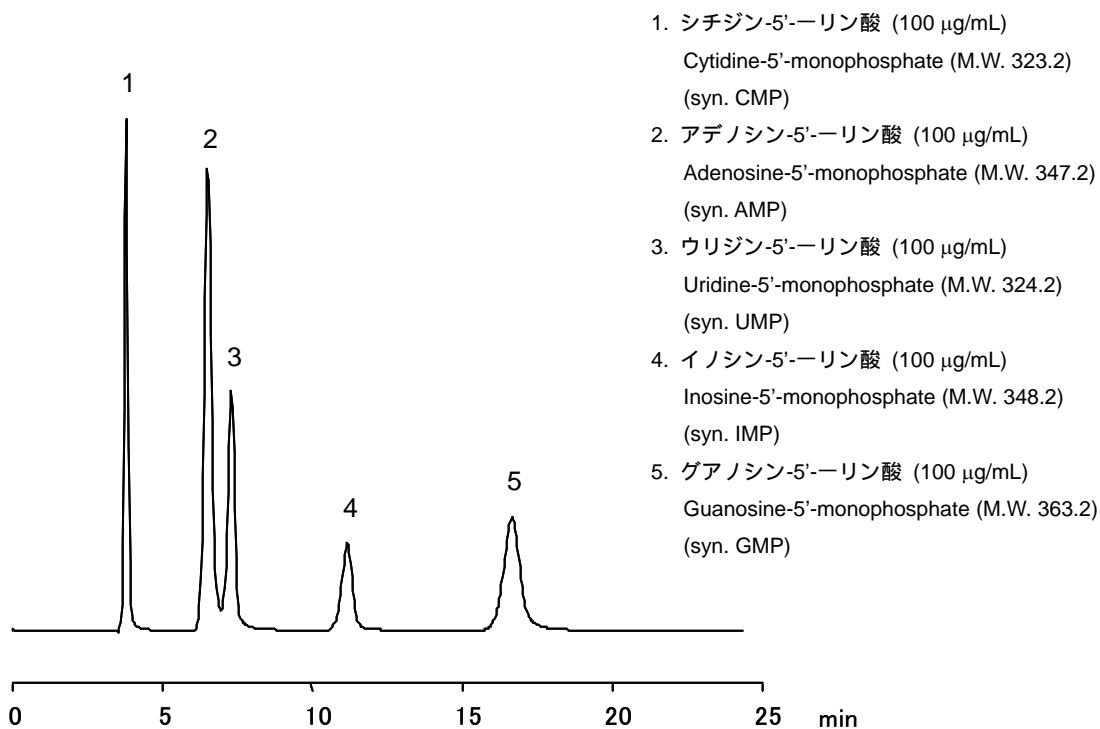
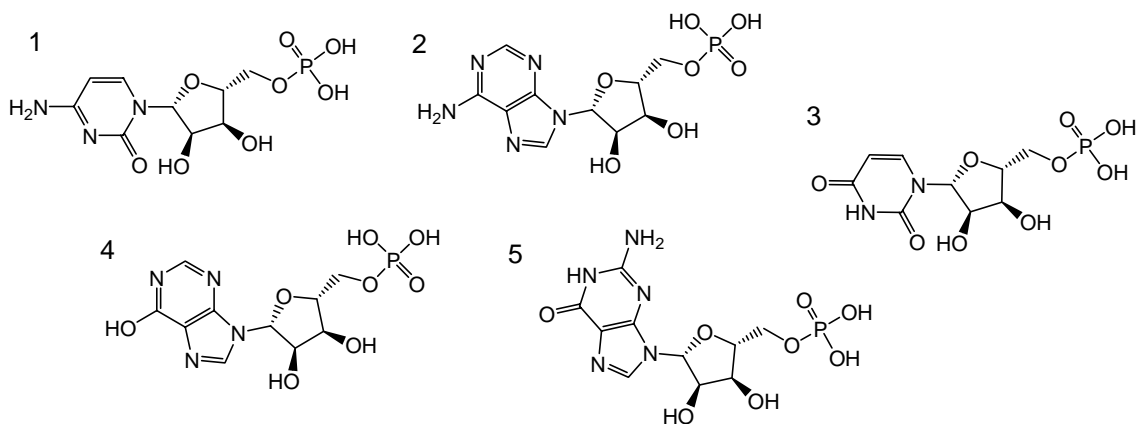


## ヌクレオチド

## Nucleotides



## 【HPLC Conditions】

Column : CAPCELL PAK NH<sub>2</sub> UG80 S5 ; 2.0 mm i.d. x 250 mm  
 Mobile phase : 50 mmol/L (NH<sub>4</sub>)<sub>2</sub>HPO<sub>4</sub> (adjusted at pH 3 with phosphoric acid)  
 Flow rate : 200 μL/min  
 Temperature : 40 °C  
 Detection : UV 260 nm  
 Inj. Vol. : 2 μL  
 Sample dissolved in : Mobile phase (100 μg/mL)  
 ※ 1 μg/mL = 1 ppm