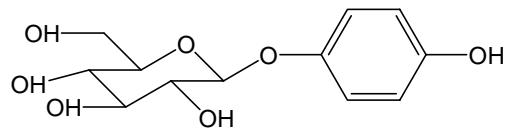


ウワウルシ中アルブチン

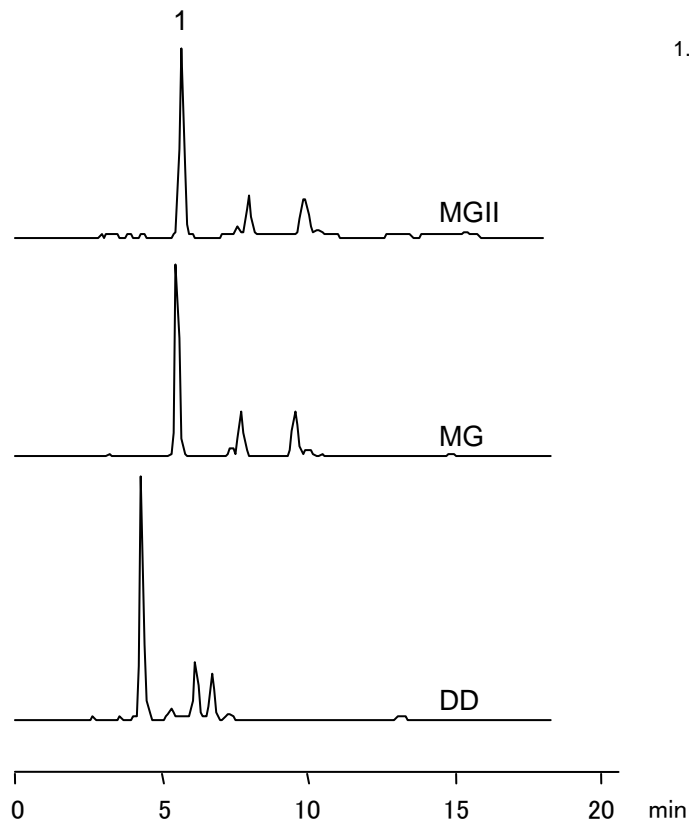
Arbutin

ウワウルシは日本薬局方収載の生薬で、尿路消毒薬として用いられています。アルブチンにはメラニン色素の生成を抑制する効果もあるため、化粧品添加物としても用いられています。

Bearberry Leaf is listed as a crude medicine in The Japanese Pharmacopoeias, and used as urinary antiseptic. Arbutin, one of its components, is known to inhibit the generation of melanin, and is used as an ingredient of cosmetic products.



1. アルブチン
Arbutin (M.W. 272.3)



【HPLC Conditions】

Column : CAPCELL PAK C₁₈ MGII S5 ; 4.6 mm i.d. x 150 mm
CAPCELL PAK C₁₈ MG S5 ; 4.6 mm i.d. x 150 mm
CAPCELL PAK C₈ DD S5 ; 4.6 mm i.d. x 150 mm

Mobile phase : H₂O / CH₃OH / 0.1 mol/L HCl = 94 / 5 / 1

Flow rate : 0.9 mL/min

Temperature : 20 °C

Detection : UV 280 nm

Inj.vol. : 10 μL

Pretreatment : Bearberry leaves (0.5 g) were ground and dispersed into 40 mL of water. After being sonicated for 30 min, the dispersion was filtered with filter paper. The residue was rinsed with water. The filtered liquid and the water used for rinsing were added together and adjusted to 100 mL in a volumetric flask. A small amount of the solution was further filtered with a 0.2-μm filter, and introduced to HPLC.
※ 1 μg/mL = 1 ppm

【References】

1) The Japanese Pharmacopoeia, (14th ~ 15th Edition) 第 14 ~ 15 改正, 日本薬局方