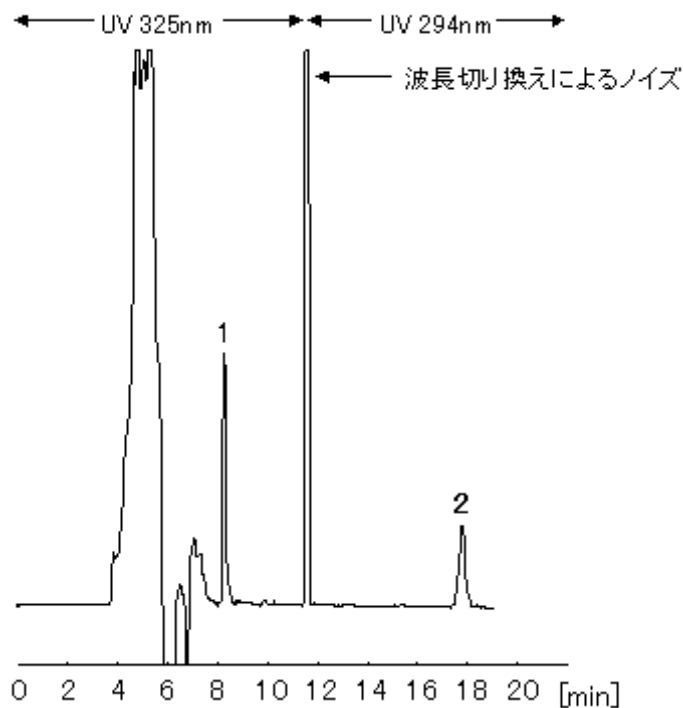


Diluted 10-fold with a solution, where glutathione 3%, SDS 100 mmol/L, and EDTA-4Na 100 mmol/L are dissolved in 30% CH₃CN



1 Vitamin A

2 Vitamin E

Conditions of Primary separation and Focusing

Precolumn	CAPCELL PAK MF Cartridge (Ph-1) : 4.0 mm i.d.×10 mm
Mobile phase	H ₂ O / CH ₃ CN = 80 / 20
Flow rate	[valve position A] 200 μL/min (0-3min) [valve position B] 100 μL/min (3min-)
Temperature	40 °C
Detect	UV
Inj. vol.	40 μL

Conditions of Final separation

Analytical column	CAPCELL PAK C ₁₈ UG120 S5 : 1.5 mm i.d.×150 mm
Mobile phase	CH ₃ CN / H ₂ O / CHCl ₃ = 90 / 5 / 5
Flow rate	100 μL/min
Temperature	40 °C

Detect

UV Vitamin A : 325 nm, Vitamin E : 294 nm