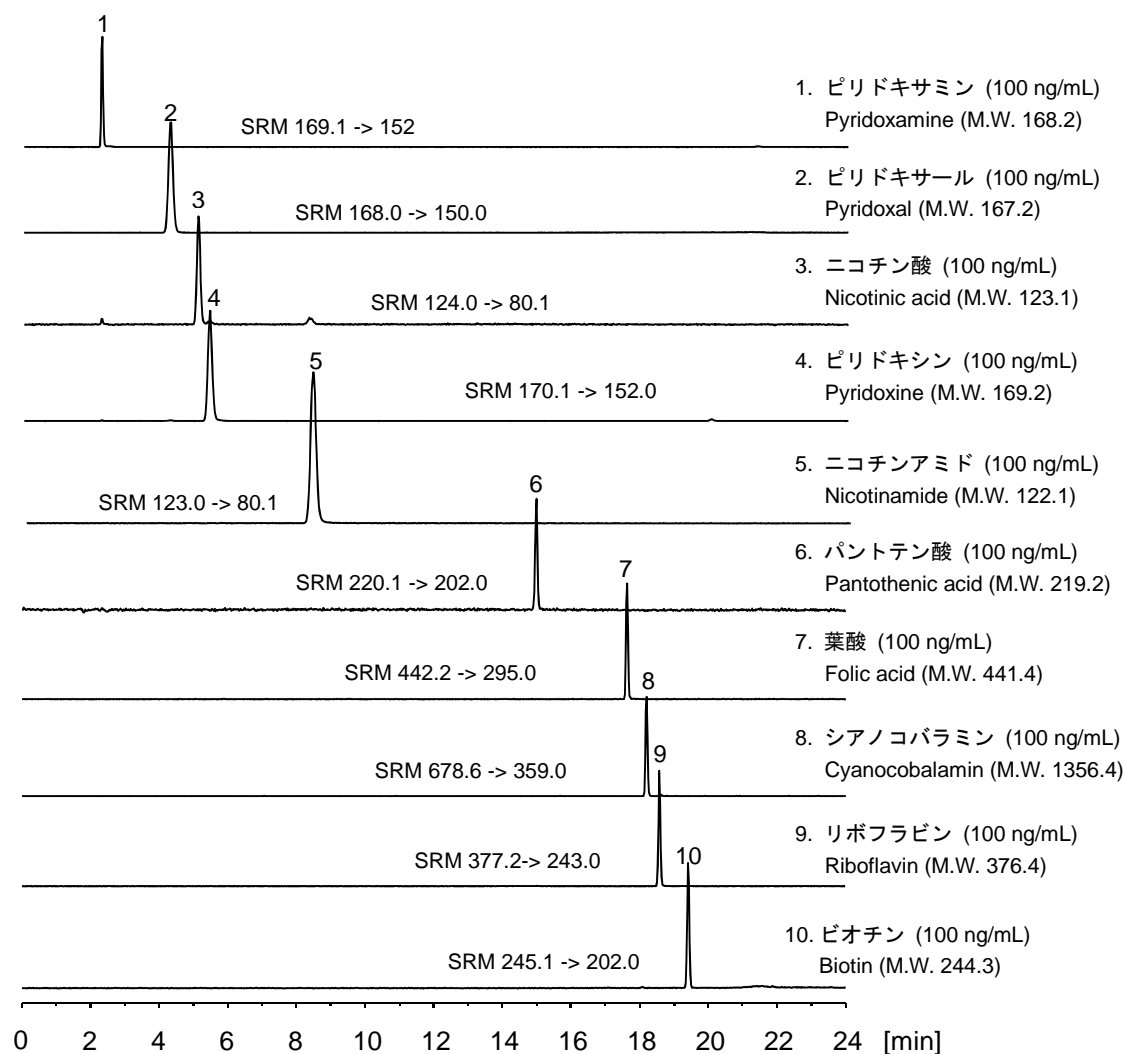


水溶性ビタミン

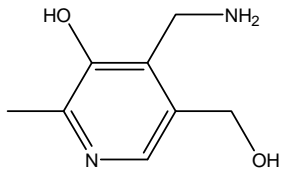
Water-soluble vitamins

水溶性ビタミン 10 種類について、CAPCELL PAK ADME S3 (2.1 mm i.d. x 150 mm) を用い、LC-MS にて分析した例を示します。

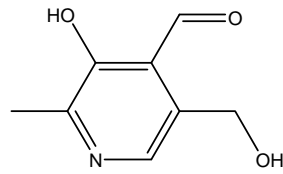


【HPLC Conditions】

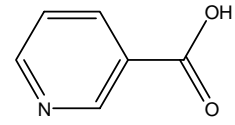
Column : CAPCELL PAK ADME S3 ; 2.1 mm i.d. x 150 mm
 Mobile phase : A) 10 mmol/L HCOONH₄ (pH 3, HCOOH)
 B) CH₃CN (pH 3, HCOOH)
 B 1 % (0 min) -> 1 % (6 min) -> 35 % (20 min)
 -> 1 % (20.1 min) Gradient
 Flow rate : 200 μL/min
 Temperature : 30 °C
 Detection : MS, ESI Positive
 Inj. vol. : 1 μL
 Sample dissolved in : Folic acid, Riboflavin and Biotin were separately dissolved in 0.1 mol/L NaOH. The other compounds were dissolved in water, and mixed together, diluted with water at 100 ng/mL.



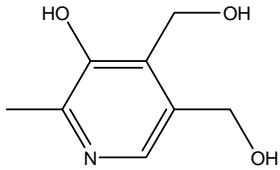
1. ピリドキサミン (100 ng/mL)
Pyridoxamine (M.W. 168.2)



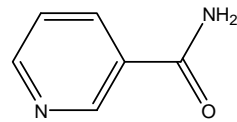
2. ピリドキサル (100 ng/mL)
Pyridoxal (M.W. 167.2)



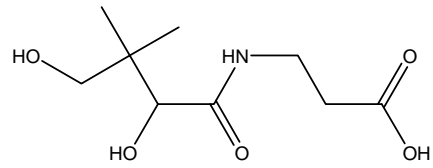
3. ニコチン酸 (100 ng/mL)
Nicotinic acid (M.W. 123.1)



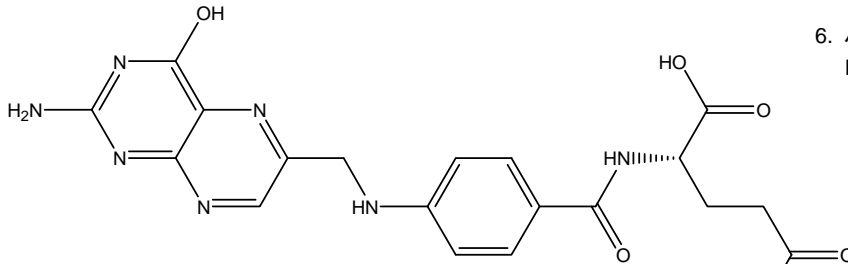
4. ピリドキシン (100 ng/mL)
Pyridoxine (M.W. 169.2)



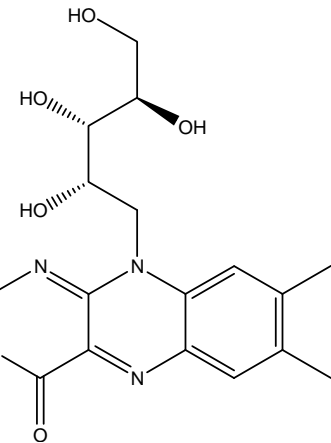
5. ニコチンアミド (100 ng/mL)
Nicotinamide (M.W. 122.1)



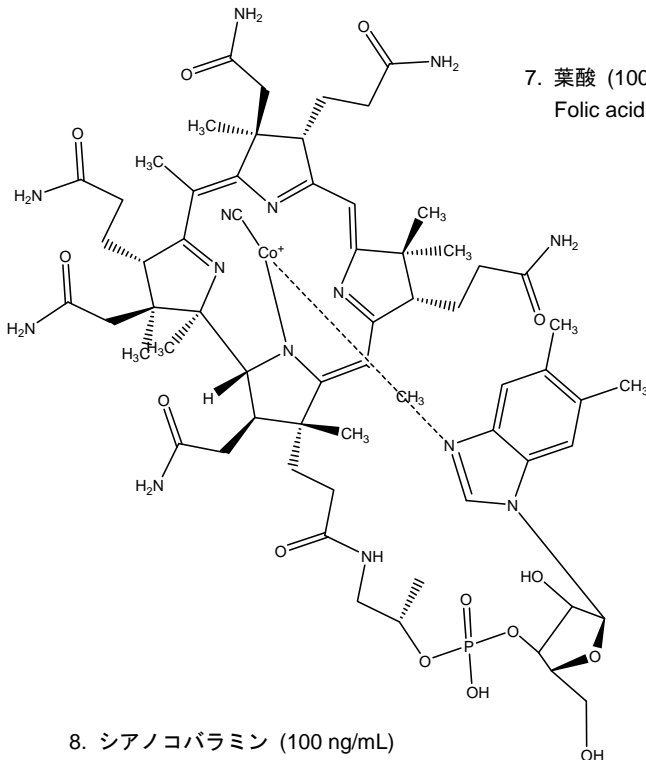
6. パントテン酸 (100 ng/mL)
Pantothenic acid (M.W. 219.2)



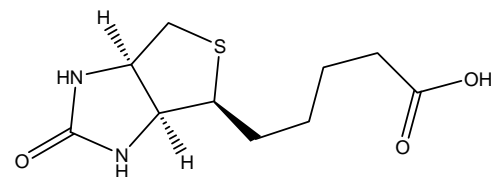
7. 葉酸 (100 ng/mL)
Folic acid (M.W. 441.4)



9. リボフラビン (100 ng/mL)
Riboflavin (M.W. 376.4)



8. シアノコバラミン (100 ng/mL)
Cyanocobalamin (M.W. 1356.4)



10. ビオチン (100 ng/mL)
Biotin (M.W. 244.3)