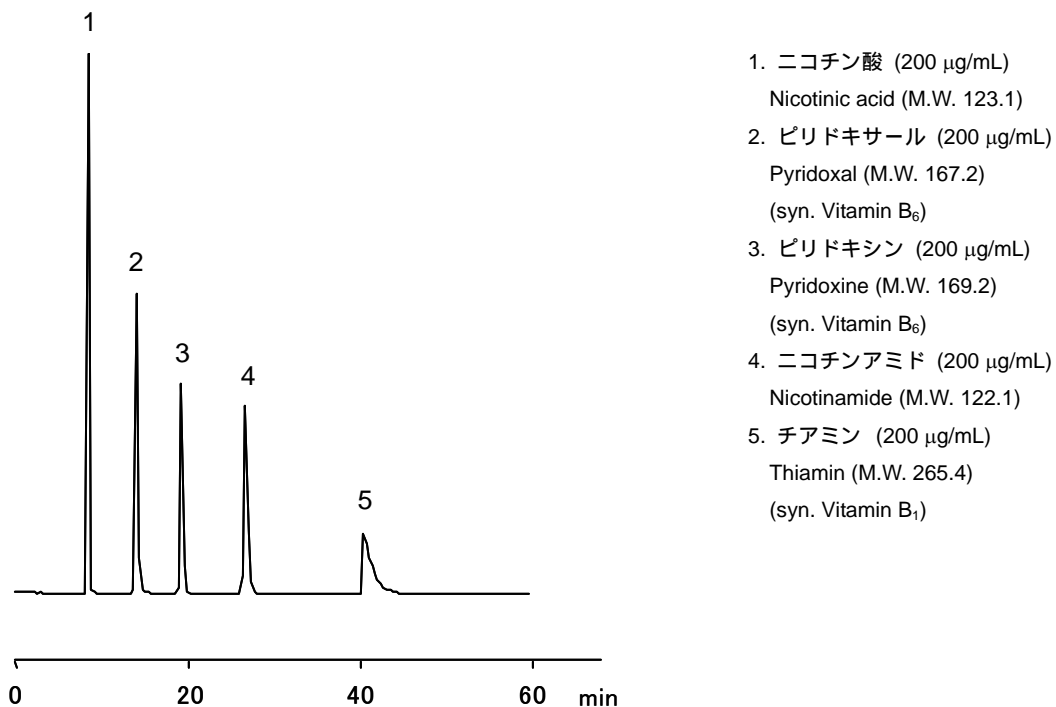


水溶性ビタミン

Hydrophilic vitamins

移動相の液性が中性であるためチアミンのピークがテーリングします。なお、酸性条件ではチアミンのピークはテーリングしません。

Thiamin shows a peak tailing under the neutral mobile phase condition. An acidic mobile phase solves the problem.



【HPLC Conditions】

Column : CAPCELL PAK C₁₈ AQ S5 ; 4.6 mm i.d. x 250 mm
Mobile phase : 50 mmol/L KH₂PO₄ / 50 mmol/L Na₂HPO₄ = 1 / 1
Flow rate : 1 mL/min
Temperature : 30 °C
Detection : UV 254 nm
Inj. vol. : 10 µL
Sample dissolved in : Each compound was separately dissolved in water at 10 mg/mL. 20 µL of all the solutions were mixed together. The mixture was diluted to 1 mL by adding the mobile phase.
※ 1 µg/mL = 1 ppm