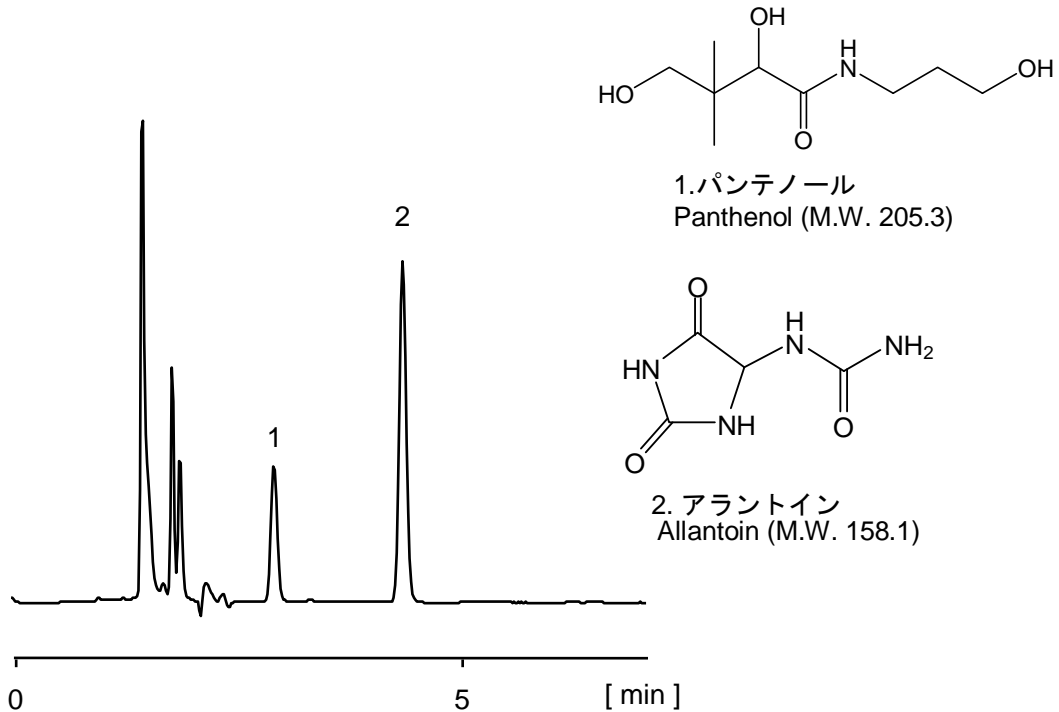


リップクリーム中のパンテノール Panthenol formulated in lip cream



【HPLC Conditions】

- Column : PC HILIC S3 ; 2.0 mm i.d. x 150 mm
Mobile phase : H₂O / CH₃CN = 10 / 90
Flow rate : 200 μL/min
Temperature : 40 °C
Detection : UV 210 nm
Inj. vol. : 1 μL
Pretreatment : Lip cream (0.1 g) was dispersed in 1 mL of tetrahydrofuran.
4 mL of 70% acetonitrile was added to the dispersion.
After centrifugation, the supernatant was injected to the HPLC system.
※ 1 μg/mL = 1 ppm