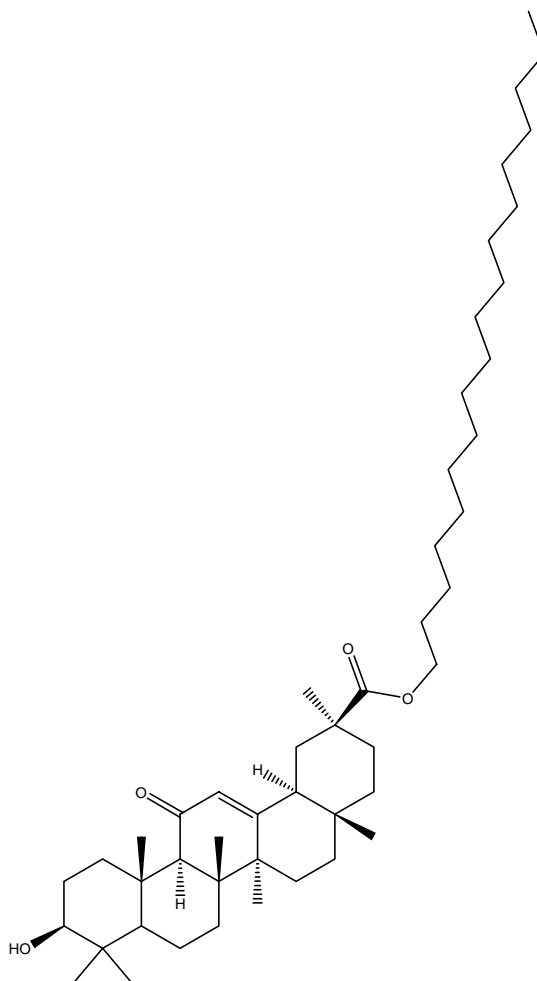
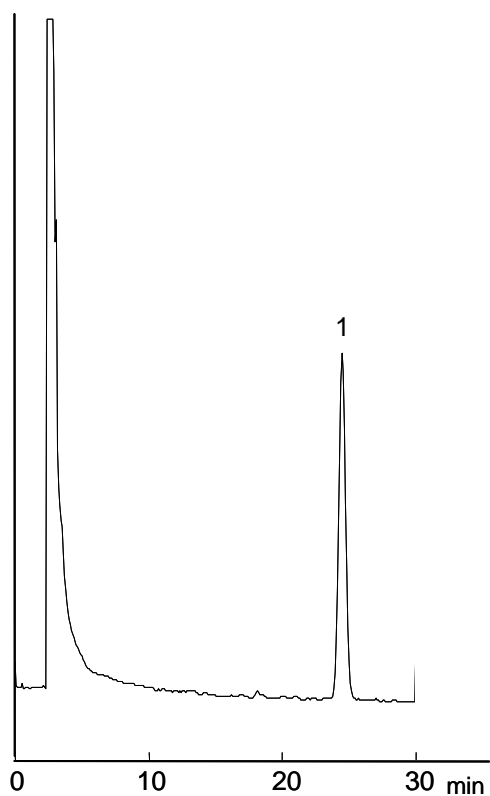


グリチルレチン酸ステアリル

Stearyl glycyrrhettinate

1. グリチルレチン酸ステアリル (20 µg/mL)

Stearyl glycyrrhettinate (M.W. 723.2)



[HPLC Conditions]

Column : CAPCELL PAK C<sub>18</sub> UG120 S5 ; 4.6 mm i.d. x 250 mm  
 Mobile phase : CH<sub>3</sub>OH  
 Flow rate : 1 mL/min  
 Temperature : R.T.  
 Detection : UV 254 nm  
 Inj. vol. : 15 µL  
 Sample dissolved in : Its 5 mg/mL solution (in chloroform) was diluted to 20 µg/mL with a mixed solvent (acetone / chloroform = 9 / 1)  
 1 µg/mL = 1 ppm