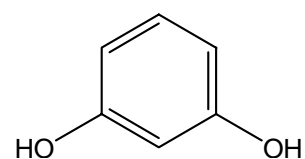
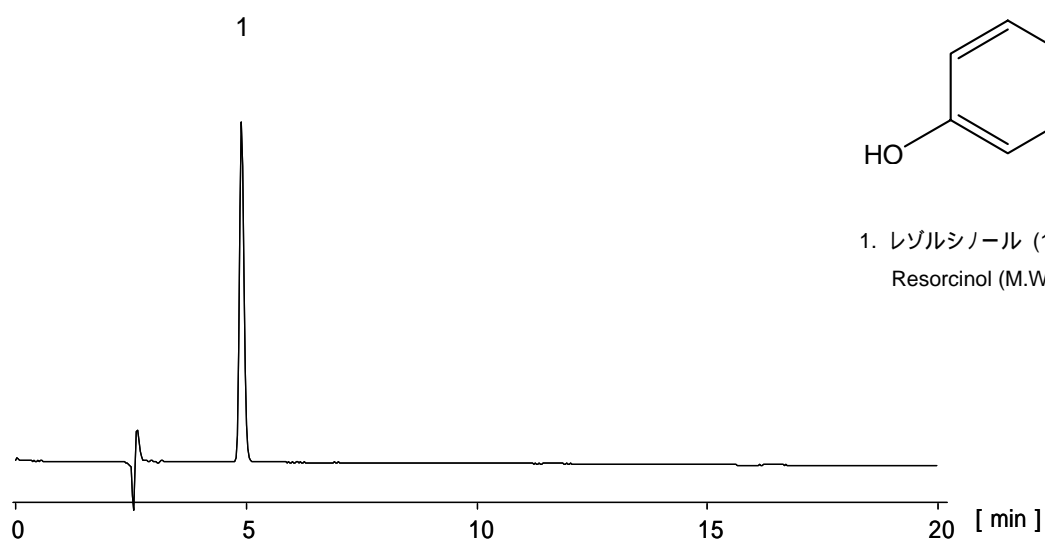


レゾルシノール

Resorcinol



1. レゾルシノール (100  $\mu\text{g}/\text{mL}$ )  
Resorcinol (M.W. 110.1)

[HPLC Conditions]

Column : CAPCELL PAK C<sub>18</sub> MGII S5 ; 2.0 mm i.d. x 250 mm  
Mobile phase : 0.4 vol% H<sub>3</sub>PO<sub>4</sub> / CH<sub>3</sub>CN = 70 / 30  
Flow rate : 200  $\mu\text{L}/\text{min}$   
Temperature : 40 °C  
Detection : UV 280 nm  
Inj. vol. : 2  $\mu\text{L}$   
Sample dissolved in : Mobile phase  
1  $\mu\text{g}/\text{mL}$  = 1 ppm