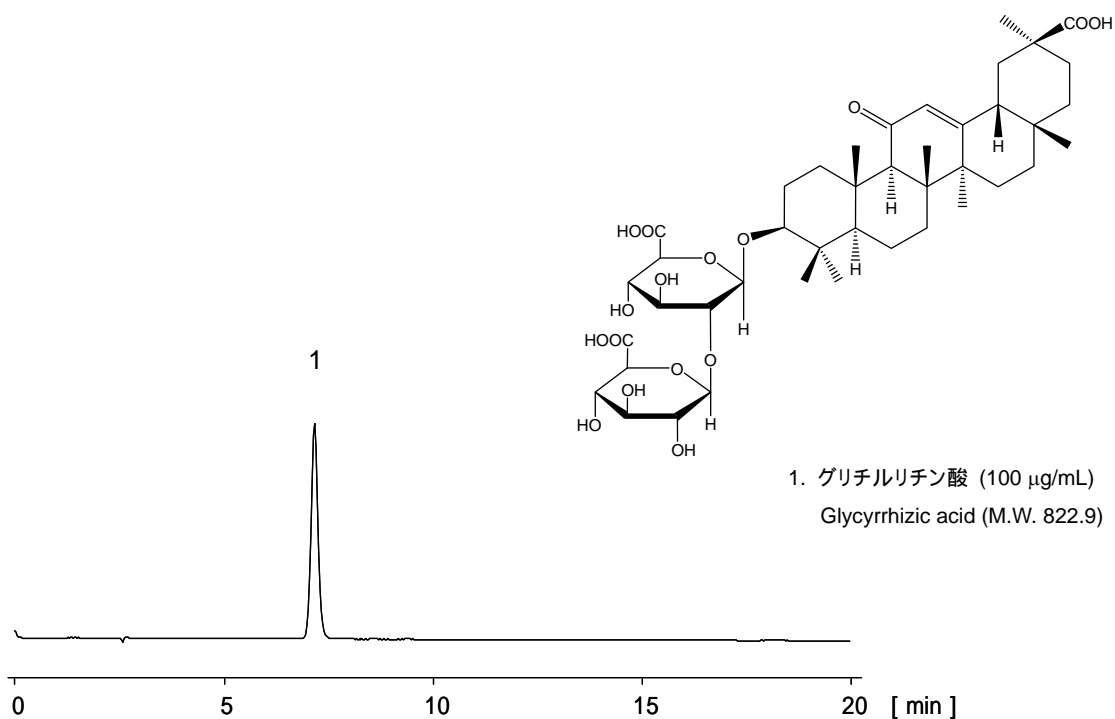


グリチルリチン酸

Glycyrrhizic acid



[HPLC Conditions]

Column : CAPCELL PAK C<sub>18</sub> UG120 S5 ; 2.0 mm i.d. x 250 mm  
 Mobile phase : 1.5 vol% H<sub>3</sub>PO<sub>4</sub> / CH<sub>3</sub>CN = 60 / 40  
 Flow rate : 200 μL/min  
 Temperature : 40 °C  
 Detection : UV 254 nm  
 Inj. vol. : 2 μL  
 Sample dissolved in : Mobile phase  
 1 μg/mL = 1 ppm