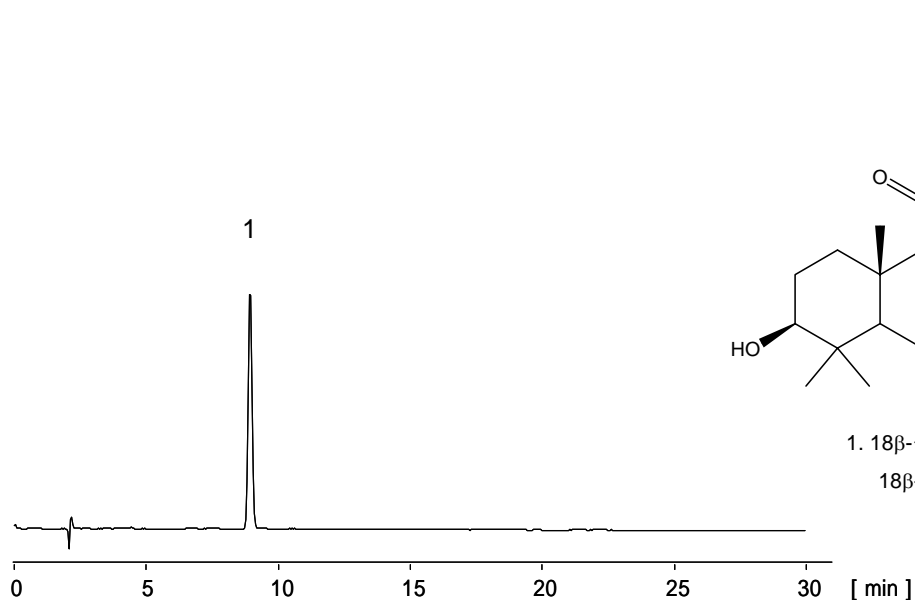


18β-グリチルレチン酸

18β-Glycyrrhetic acid



[HPLC Conditions]

Column : CAPCELL PAK C₁₈ MGII S5 ; 2.0 mm i.d. x 250 mm
Mobile phase : 0.2 vol% H₃PO₄ / CH₃CN = 25 / 75
Flow rate : 200 μL/min
Temperature : 40 °C
Detection : UV 230 nm
Inj. vol. : 2 μL
Sample dissolved in : Mobile phase
1 μg/mL = 1 ppm