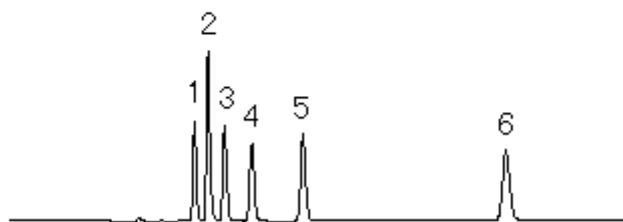
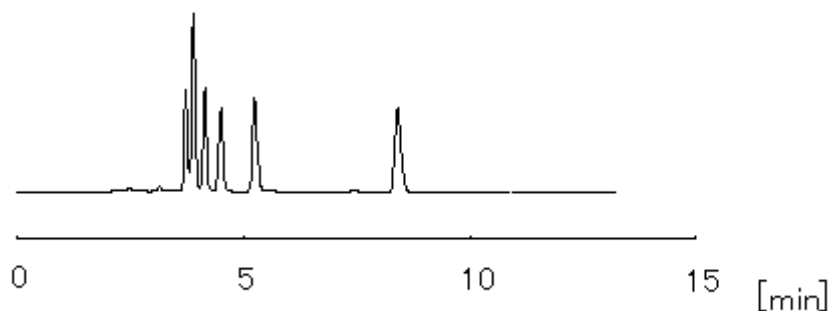


HPLC Conditions 1



HPLC Conditions 2



1 Malonic acid

2 Lactic acid

3 Acetic acid

4 Citric acid

5 Succinic acid

6 Propionic acid

HPLC Conditions 1

Column CAPCELL PAK C18 MG S5 : 4.6 mm i.d.×250 mm

Mobile phase 0.1 vol% H₃PO₄, H₂O / CH₃CN = 97.5 / 2.5

Flow rate 1.0 mL/min

Temperature 40 °C

Detect UV 210 nm

HPLC Conditions 2

Column CAPCELL PAK C18 UG120 S5 : 4.6 mm i.d.×250 mm

Mobile phase 0.1 vol% H₃PO₄, H₂O / CH₃CN = 97.5 / 2.5

Flow rate 1.0 mL/min

Temperature 40 °C

Detect UV 210 nm

