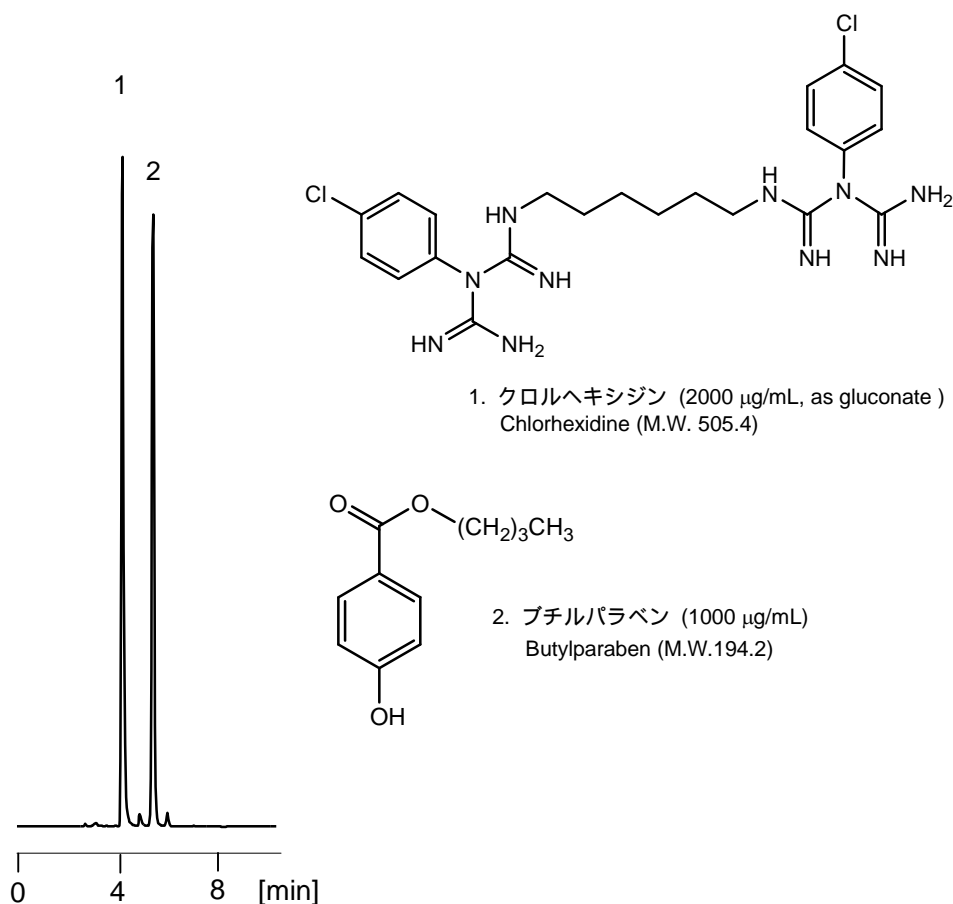


## グルコン酸クロルヘキシジン

## Chlorhexidine gluconate

グルコン酸クロルヘキシジンを内部標準のパラオキシ安息香酸ブチル（ブチルパラベン）とともに分析した例を示します。

Chlorhexidine gluconate was analyzed with butyl *p*-hydroxybenzoate (butylparaben), the internal standard compound.



### 【HPLC Conditions】

Column	: CAPCELL PAK C <sub>18</sub> UG120 S5 ; 4.6 mm i.d. x 250 mm
Mobile phase	: 20 mmol/L Sodium octanesulfonate, 0.3 % H <sub>3</sub> PO <sub>4</sub> / CH <sub>3</sub> CN = 40 / 60
Flow rate	: 900 $\mu\text{L/min}$
Temperature	: 40
Detection	: UV 254 nm
Inj. vol.	: 1 $\mu\text{L}$
Sample dissolved in	: A disinfectant containing chlorhexidine gluconate at 2000 $\mu\text{g/mL}$ and butylparaben (added) at 1000 $\mu\text{g/mL}$ was directly introduced to HPLC.

1  $\mu\text{g/mL}$  = 1 ppm