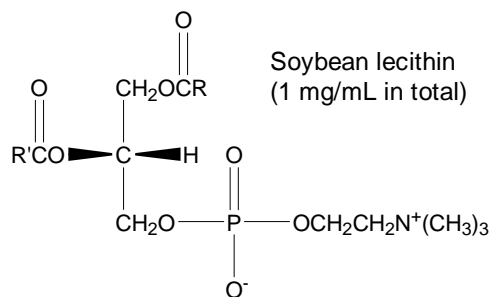


## 大豆由来レシチン

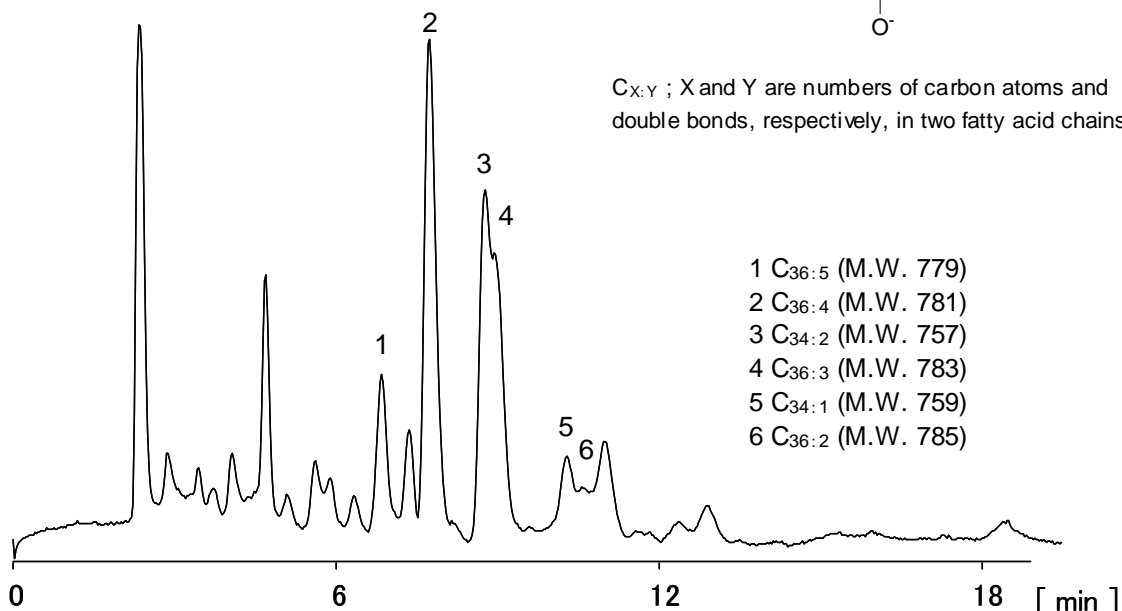
## Soybean lecithin

リン脂質レシチンは大豆や卵黄に多く含まれています。大豆由来のレシチンを CAPCELL PAK C<sub>18</sub> MGIII と Corona<sup>®</sup> CAD<sup>®</sup> を組み合わせて分析した例を紹介します。

A large amount of lecithin, one of the phospholipids, is contained in soybean and egg yolk. Shown here is the separation of soybean lecithin obtained with a MGIII column and Corona charged aerosol detector (CAD).



C<sub>X:Y</sub>; X and Y are numbers of carbon atoms and double bonds, respectively, in two fatty acid chains.



### Soybean lecithin

#### 【HPLC Conditions】

Column : CAPCELL PAK C<sub>18</sub> MGIII S5 ; 2.0 mm i.d. x 250 mm  
Mobile phase : CH<sub>3</sub>OH  
Flow rate : 200 μL/min  
Temperature : 40 °C  
Detection : Corona CAD  
Inj. vol. : 10 μL  
Sample dissolved in : The standard compound dissolved in chloroform at 10 mg/mL, and then, diluted to 1 mg/mL with methanol.  
※ 1 μg/mL = 1 ppm