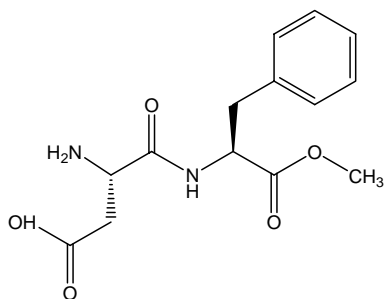
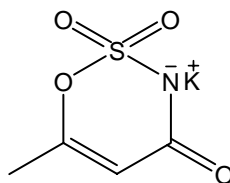


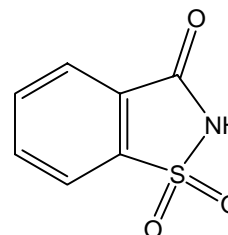
1. アスパルテーム (100  $\mu\text{g/mL}$ )  
Aspartame (M.W. 294.3)
2. アセスルファムK (100  $\mu\text{g/mL}$ )  
Acesulfame K (M.W. 201.2)
3. サッカリン (100  $\mu\text{g/mL}$ )  
Saccharin (M.W. 183.2)



1. Aspartame



2. Acesulfame K



3. Saccharin

## 【HPLC Conditions】

- Column : CAPCELL PAK UG120 S5 ; 2.0 mm i.d. x 150 mm  
 Mobile phase : 5 mmol/L Tetra-*n*-butylammonium Chloride (pH 4.0, H<sub>3</sub>PO<sub>4</sub>) / CH<sub>3</sub>CN = 75 / 25  
 Flow rate : 200  $\mu\text{L/min}$   
 Temperature : 40 °C  
 Detection : UV 210 nm  
 Inj. vol. : 2  $\mu\text{L}$   
 Sample dissolved in : Mobile phase (100  $\mu\text{g/mL}$  each)  
 1  $\mu\text{g/mL}$  = 1 ppm