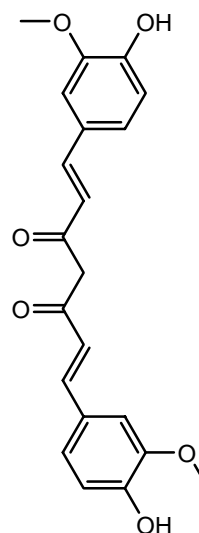
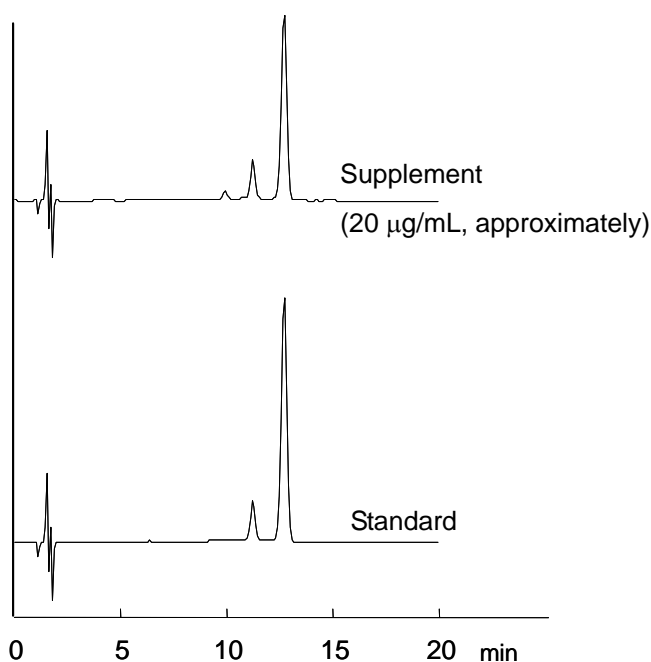


1. クルクミン (20 $\mu\text{g/mL}$)
Curcumin (M.W. 368.4)

**【HPLC Conditions】**

- Column : CAPCELL PAK C₁₈ MGII S5 ; 4.6 mm i.d. x 150 mm
Mobile phase : Trifluoroacetic acid was added to a solution (H₂O / CH₃CN = 55 / 45) at 0.1 vol%.
Flow rate : 1 mL/min
Temperature : 40 °C
Detection : UV 420 nm
Inj. vol. : 5 μL
Pretreatment : The standard compound was dissolved in the mobile phase at 20 $\mu\text{g/mL}$. The content of the supplement was diluted with methanol so that the concentration of curcumin be 1 mg/mL, approximately, and sonicated for five minutes. After leaving it for a while the upper layer was filtered with a 0.2- μm filter, diluted with methanol at 20 $\mu\text{g/mL}$, and introduced to HPLC.
※ 1 $\mu\text{g/mL}$ = 1 ppm