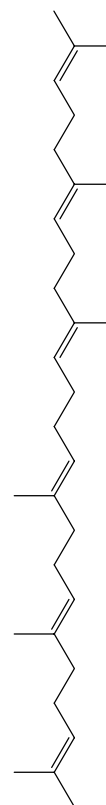
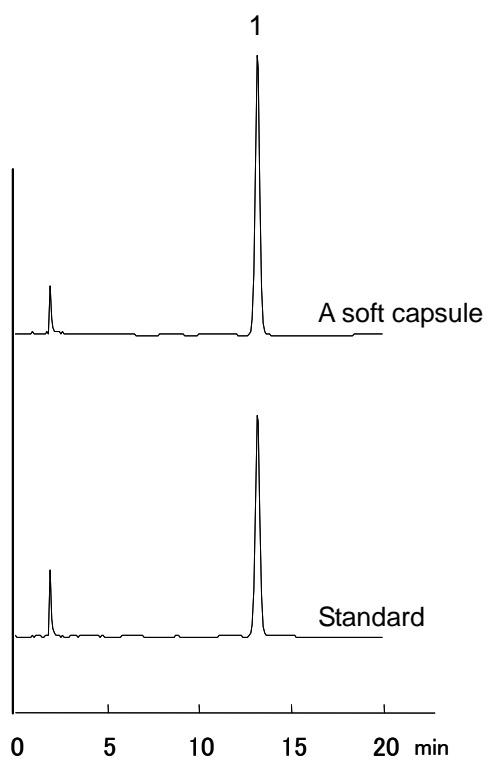


1. スクワレン (100 $\mu\text{g/mL}$)

Squalene (M.W. 410.7)



【HPLC Conditions】

Column	: CAPCELL PAK C ₁₈ MGII S5 ; 4.6 mm i.d. x 150 mm
Mobile phase	: CH ₃ OH
Flow rate	: 1 mL/min
Temperature	: 40 °C
Detection	: UV 215 nm
Inj. vol.	: 5 μL
Pretreatment	: The standard compound was dissolved in methanol at 100 $\mu\text{g/mL}$, and the content of the soft capsule was dissolved in methanol so that the final concentration be approximately 100 $\mu\text{g/mL}$.

※ 1 $\mu\text{g/mL}$ = 1 ppm