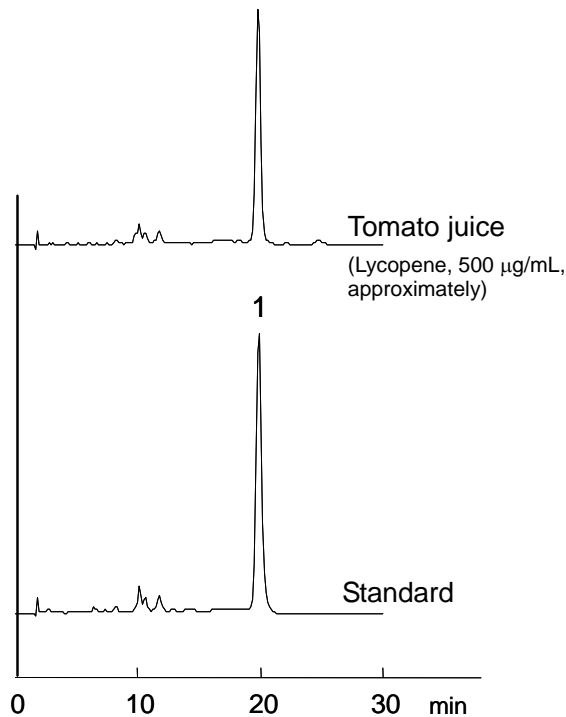


1. リコペン (100 µg/mL)

Lycopene (M.W. 536.9)



【HPLC Conditions】

- Column : CAPCELL PAK C₁₈ MGII S5 ; 4.6 mm i.d. x 250 mm
 - Mobile phase : CH₃OH / CH₃Cl = 97 / 3
 - Flow rate : 1 mL/min
 - Temperature : 40 °C
 - Detection : VIS 450 nm
 - Inj. vol. : 2 µL
 - Pretreatment : The standard compound was dissolved in chloroform at 100 µg/mL. To tomato juice, twofold volume of chloroform was added. The mixture was vigorously shaken (30 sec). After centrifugation (1500 rpm, 30 sec), the bottom layer was filtered with a 0.2-µm filter and introduced to HPLC.
- ※ 1 µg/mL = 1 ppm