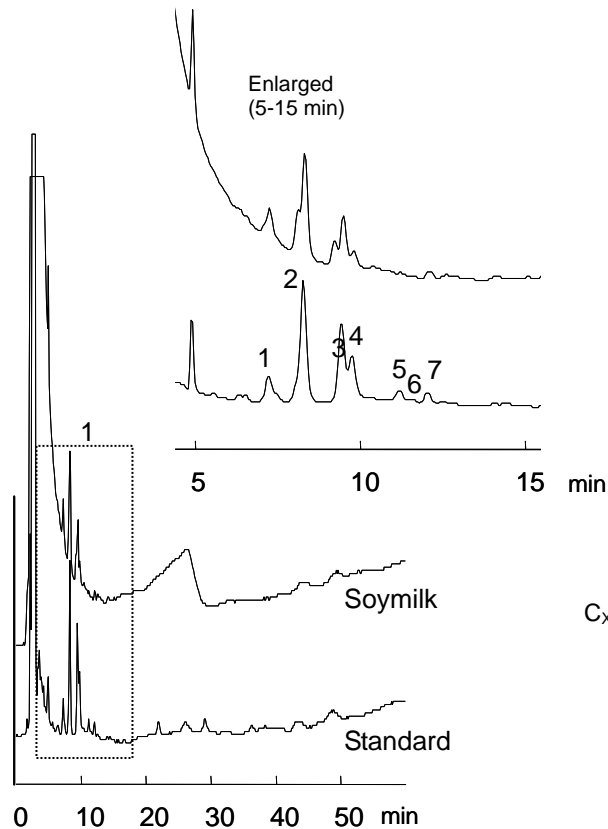


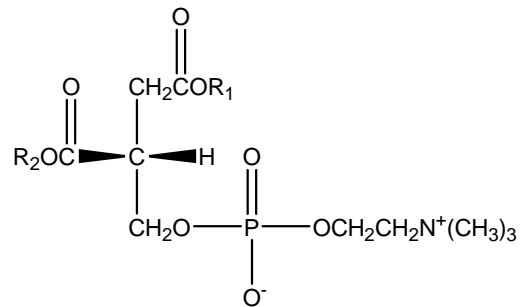
レシチン (大豆)

Lecithin (soybean)



1-7. レシチン (1 mg/mL in total)

Lecithin



C_{X:Y}; X and Y are numbers of carbon atoms and double bonds, respectively, in two fatty acid chains.

- | | |
|--------------------------------|--------------------------------|
| 1 C _{36:5} (M.W. 779) | 5 C _{34:1} (M.W. 759) |
| 2 C _{36:4} (M.W. 781) | 6 C _{36:2} (M.W. 784) |
| 3 C _{34:2} (M.W. 757) | 7 C _{36:2} (M.W. 785) |
| 4 C _{36:3} (M.W. 783) | |

【HPLC Conditions】

- Column : CAPCELL PAK C₁₈ MGII S5 ; 4.6 mm i.d. x 250 mm
 Mobile phase : CH₃OH
 Flow rate : 1 mL/min
 Temperature : 40 °C
 Detection : RI
 Inj. vol. : 20 μL
 Pretreatment : The standard compounds were dissolved in chloroform at 10 μg/mL, and diluted to 1 mg/mL with methanol. Soy milk was diluted 5-fold with methanol, and then shaken for 30 seconds. After the solution was centrifuged (1500 rpm) for 30 seconds, the upper layer was filtered with a 0.2-μm filter and introduced to HPLC.
 ※ 1 μg/mL = 1 ppm