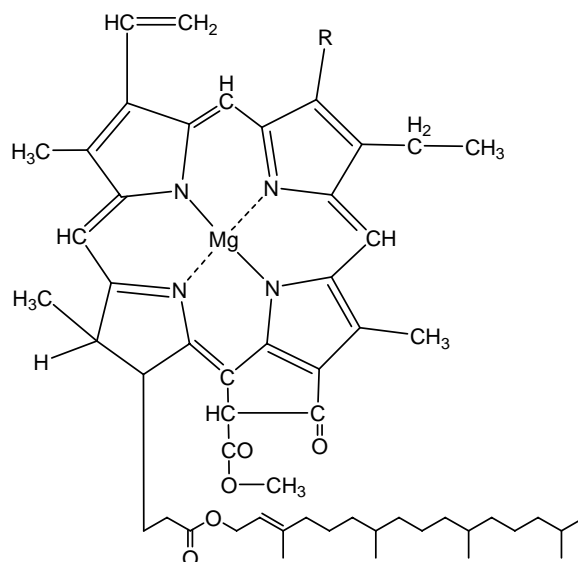
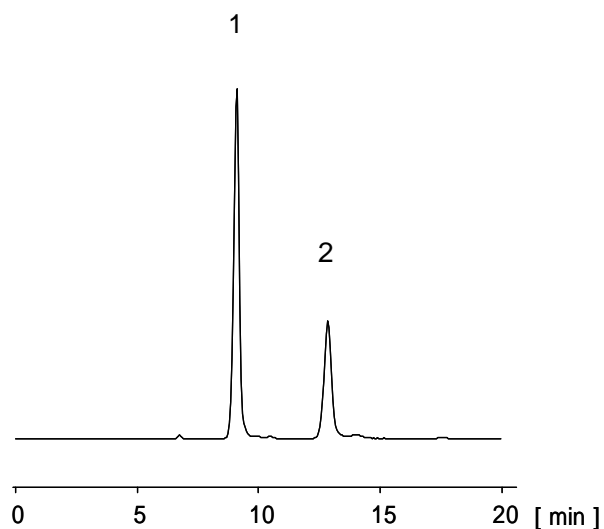


クロロフィル

Chlorophylls



1. クロロフィル a (100 $\mu\text{g/mL}$)
Chlorophyll a (R = CH_3 M.W. 893.5)

2. クロロフィル b (100 $\mu\text{g/mL}$)
Chlorophyll b (R = CHO M.W. 907.5)

[HPLC Conditions]

Column : SILICA SG80 S5 ; 2.0 mm i.d. x 250 mm
 Mobile phase : *n*-Hexane / Isopropyl alcohol = 98 / 2
 Flow rate : 200 $\mu\text{L/min}$
 Temperature : 40 °C
 Detection : VIS 430 nm
 Inj. vol. : 2 μL
 Sample dissolved in : Mobile phase
 1 $\mu\text{g/mL}$ = 1 ppm