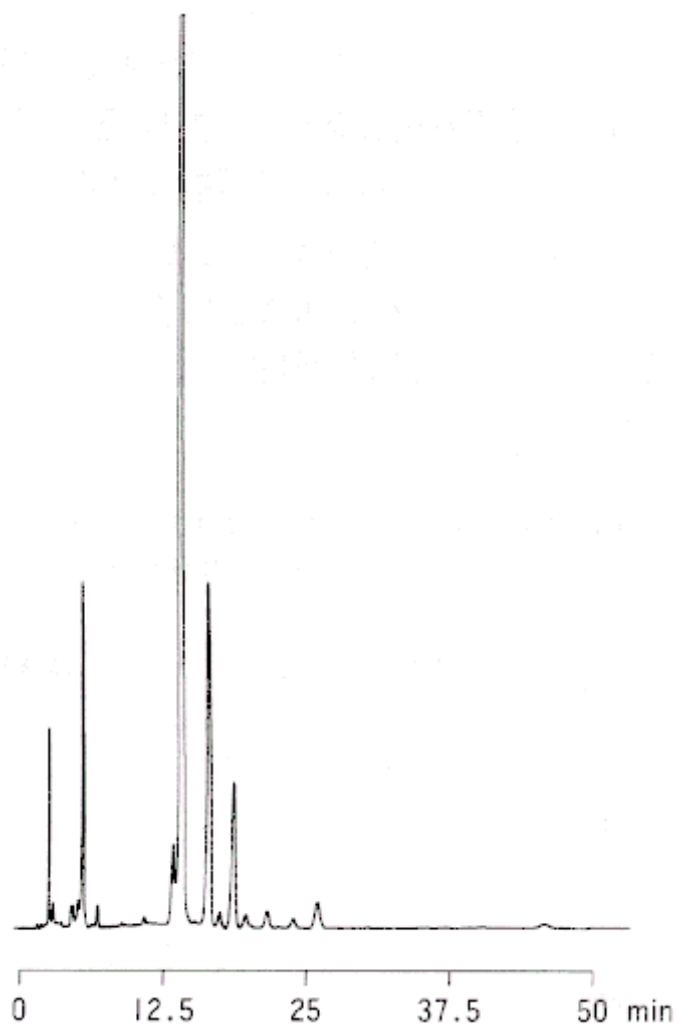


Ethyl ester fatty acids in "egoma"oil



1 α -Linolenic acid ethyl ester

HPLC Conditions

Column	CAPCELL PAK C ₁₈ UG120 S5 : 4.6 mm i.d.×250 mm
Mobile phase	CH ₃ OH / H ₂ O = 90 / 10
Flow rate	1.0 mL/min
Temperature	40 °C
Detect	UV 215 nm