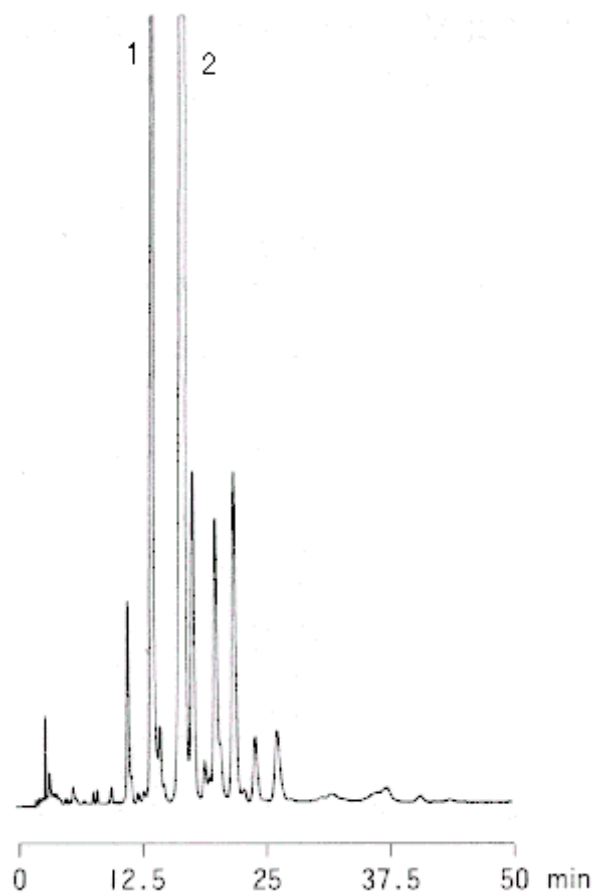


Ethyl ester in orbit oil of tuna



1 EPA Ethyl ester

2 DHA Ethyl ester

HPLC Conditions

Column CAPCELL PAK C18 UG120 S5 : 4.6 mm i.d.×250 mm

Mobile phase CH₃OH / H₂O = 90 / 10

Flow rate 1.0 mL/min

Temperature 40 °C

Detect UV 215 nm