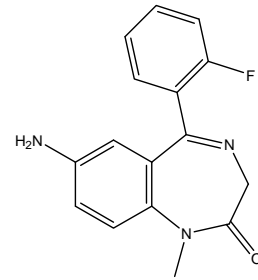
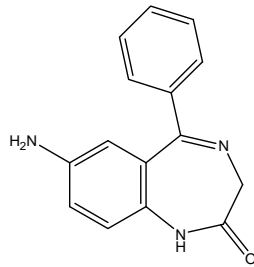
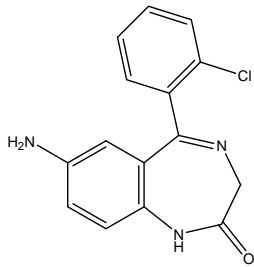
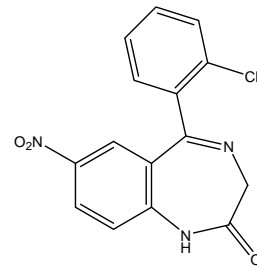
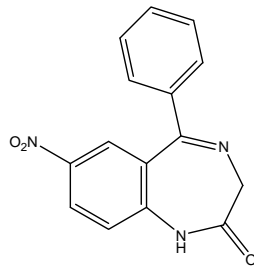
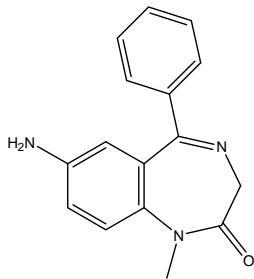


ベンゾジアゼピン類と代謝物 Benzodiazepines and metabolites

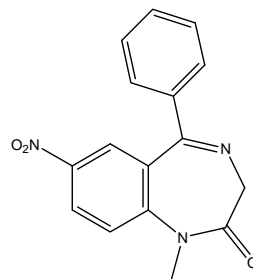
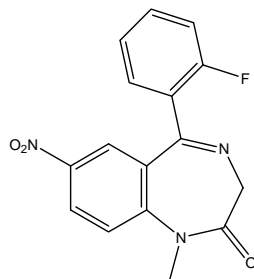
ベンゾジアゼピン類 4 種とその各代謝物の計 8 種を、CAPCELL CORE ADME S2.7 (2.1 mm i.d. x 100 mm) を用いた分析例を示します。8 種類をそれぞれ良好に分離しています。



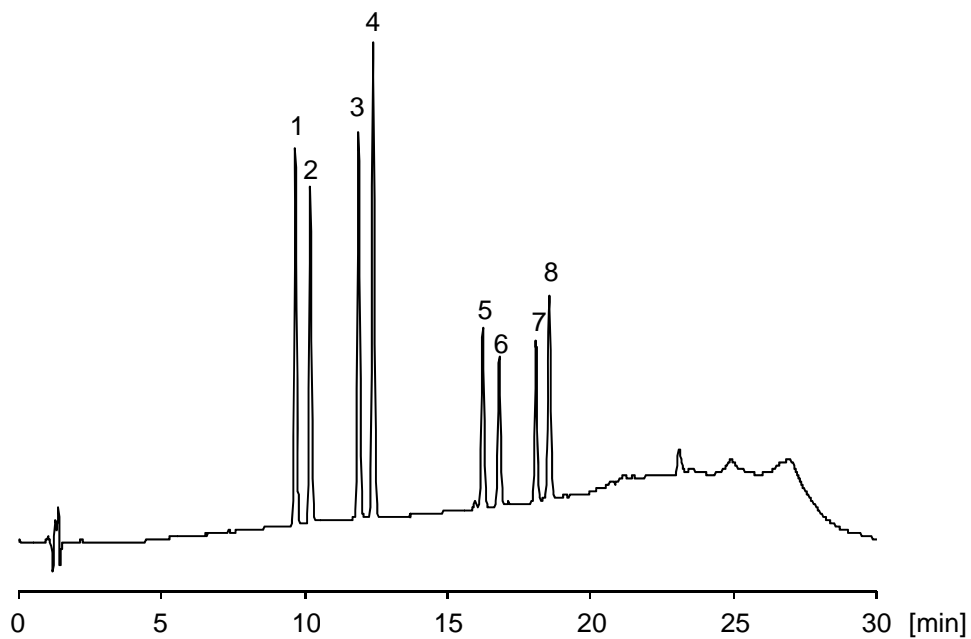
1. 7-アミノクロナゼパム (10 $\mu\text{g/mL}$) 7-Aminoclonazepam (M.W. 285.7) 2. 7-アミノニトラゼパム (10 $\mu\text{g/mL}$) 7-Aminonitrazepam (M.W. 251.2) 3. 7-アミノフルニトラゼパム (10 $\mu\text{g/mL}$) 7-Aminoflunitrazepam (M.W. 283.3)



4. 7-アミノニメタゼパム (10 $\mu\text{g/mL}$) 7-Aminonimetazepam (M.W. 265.3) 5. ニトラゼパム (10 $\mu\text{g/mL}$) Nitrazepam (M.W. 281.2) 6. クロナゼパム (10 $\mu\text{g/mL}$) Clonazepam (M.W. 315.7)



7. フルニトラゼパム (10 $\mu\text{g/mL}$) Flunitrazepam (M.W. 313.3) 8. ニメタゼパム (10 $\mu\text{g/mL}$) Nimetazepam (M.W. 295.3)



【HPLC Conditions】

Column : CAPCELL CORE ADME S2.7 ; 2.1 mm i.d. x 100 mm
 Mobile phase : A) 10 mmol/L HCOONH₄, B) CH₃CN
 B 10 % (0 min) -> 50 % (20 min) -> 10 % (20.1 min) Gradient
 Flow rate : 200 μL/min
 Temperature : 40 °C
 Detection : PDA 250 nm
 Inj. vol. : 1 μL
 Sample dissolved in : Each compound was separately dissolved in CH₃OH at
 1 mg/mL, and then, diluted with 10 vol% CH₃CN.
 ※ 1 μg/mL = 1 ppm