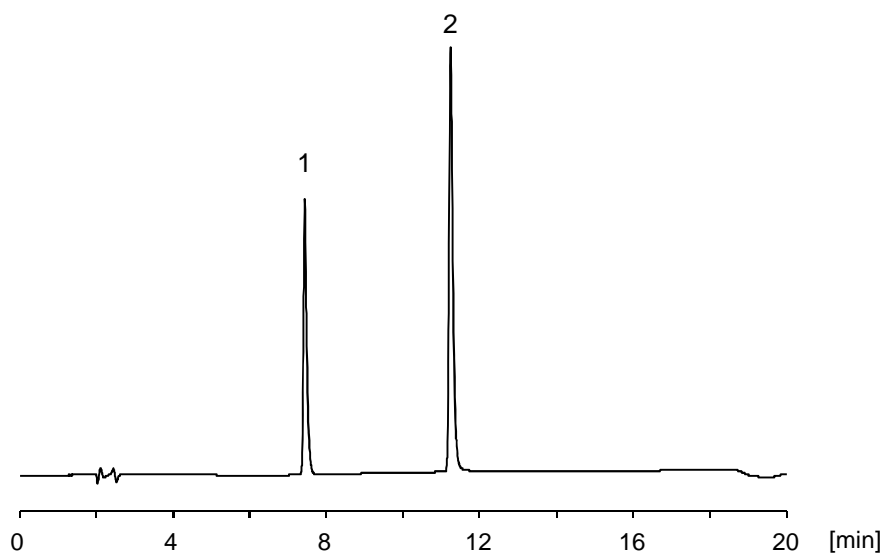
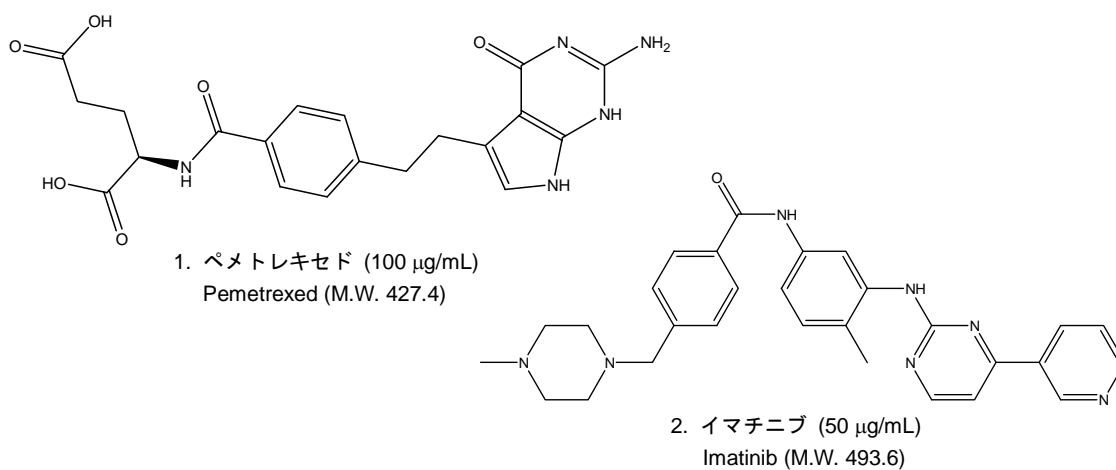


葉酸代謝拮抗剤であるペメトレキセド及び慢性骨髄性白血病治療薬であるイマチニブについて、CAPCELL PAK ADME S5 (2.1 mm i.d. x 150 mm) を用いた分析例を示します。

**【HPLC Conditions】**

Column : CAPCELL PAK ADME S5 ; 2.1 mm i.d. x 150 mm  
Mobile phase : A) 5 mmol/L HCOONH<sub>4</sub> (pH 3.0, HCOOH), B) CH<sub>3</sub>CN  
B 15 % (0 min) -> 70 % (15 min) -> 15 % (15.1 min) Gradient  
Flow rate : 200 µL/min  
Temperature : 40 °C  
Detector : PDA 254 nm  
Inj. vol. : 1 µL  
Sample dissolved in : Each compound was separately dissolved in CH<sub>3</sub>OH, and then diluted with mobile phase A.