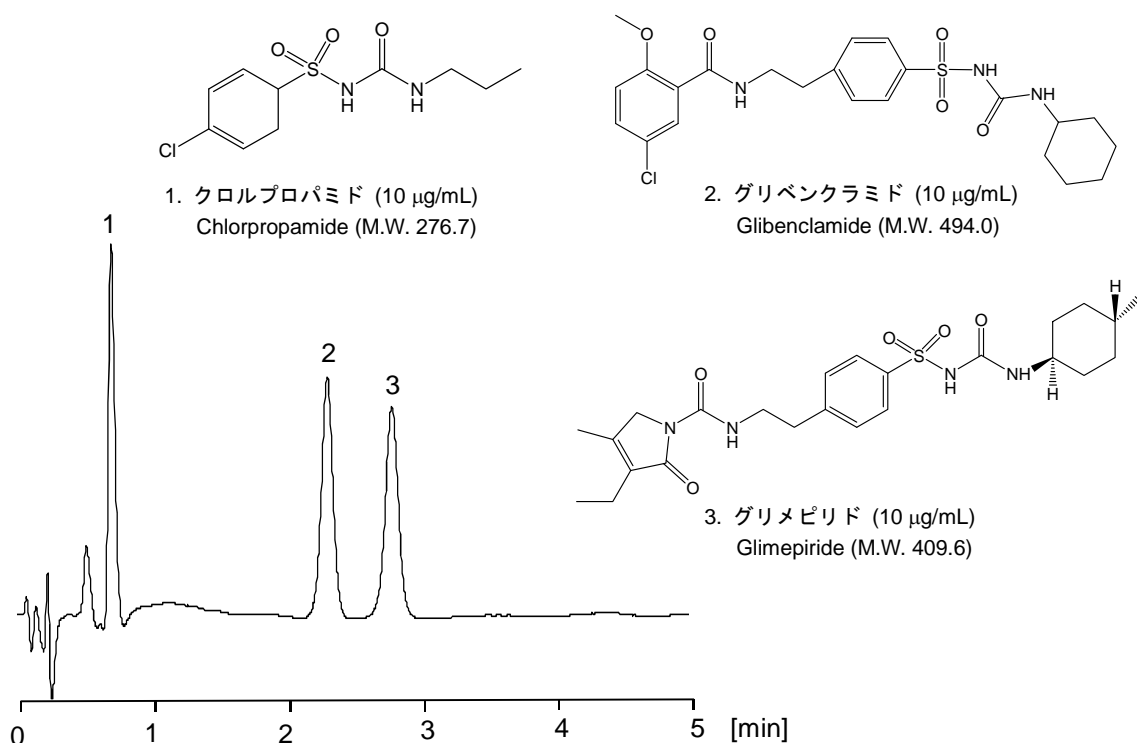


血糖降下薬

Hypoglycemic agents

スルホニルウレア系血糖降下薬であるクロルプロパミド、グリベンクラミド、並びにグリメピリドについて、ギ酸を用いた酸性の移動相で、CAPCELL PAK C₁₈ MGIII-H S3 (2.0 mm i.d. x 50 mm) による一斉分析例を示します。流速を通常の2.5倍にすることで、3分以内で測定することが可能です。

Chlorpropamide, glibenclamide, and glimepiride are hypoglycemic agents. They could be separated within three minutes, at a linear velocity 2.5 times the conventional one, with CAPCELL PAK C₁₈ MGIII-H S3 (2.0 mm i.d. x 50 mm).



【HPLC Conditions】

Column : CAPCELL PAK C₁₈ MGIII-H S3 ; 2.0 mm i.d. x 50 mm
 Mobile phase : 0.1 vol% HCOOH, H₂O / CH₃CN = 55 / 45
 Flow rate : 500 μL/min
 Temperature : 40 °C
 Detection : PDA 230 nm
 Inj. vol. : 2 μL
 Sample dissolved in : Chlorpropamide and glibenclamide standard compounds were dissolved in CH₃CN at 1000 μg/mL. Glimepiride standard compound was dissolved in 80 vol% CH₃CN at 1000 μg/mL. Equal volume of three solutions were mixed together, and then, diluted with mobile phase.

※ 1 μg/mL = 1 ppm