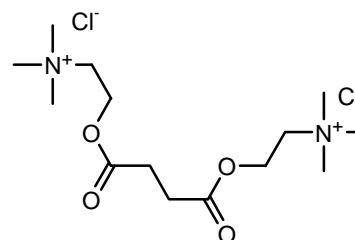
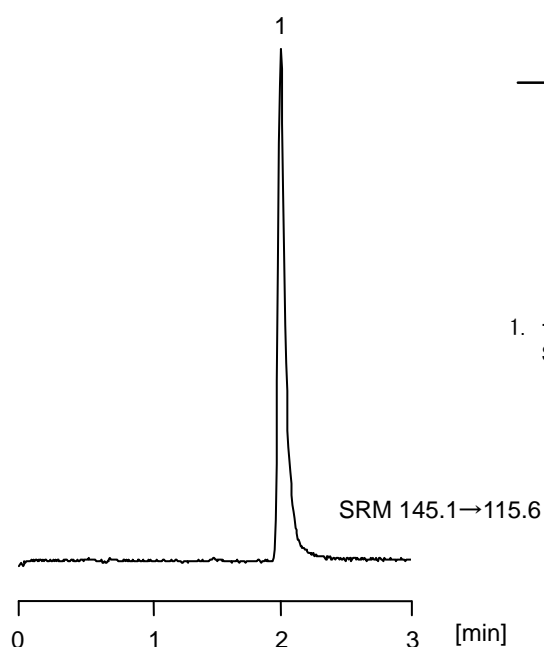


サクシニルコリン

Succinylcholine

サクシニルコリンはスキサメトニウムとも呼ばれ、筋弛緩薬のひとつです。本物質はイオン性が極めて強く逆相系カラムでの保持は困難です。親水性相互作用クロマトグラフィーのカラム、CAPCELL CORE PC S2.7 (2.1 mm i.d. x 150 mm) を用いると比較的低い塩濃度の移動相にて LC-MS 条件設定が可能です。

Succinylcholine, also known as suxamethonium, is one of the muscle relaxants. While the compound is highly ionic, the use of CAPCELL CORE PC S2.7 (2.1 mm i.d. x 150 mm), or a column for hydrophilic interaction chromatography (HILIC), makes it possible to use a mobile phase of relatively low salt concentration for its LC-MS application.



1. サクシニルコリン (50 ng/mL as chloride)
Succinylcholine (M.W. 361.3 as chloride)

【HPLC Conditions】

Column	: CAPCELL CORE PC S2.7 ; 2.1 mm i.d. x 150 mm
Mobile phase	: 0.1 vol% HCOOH, 10 mmol/L HCOONH ₄ , / 0.1 vol% HCOOH, CH ₃ CN = 30 / 70
Flow rate	: 400 μL/min
Temperature	: 35 °C
Detection	: MS
Ionization	: ESI positive
Inj. vol.	: 1 μL
Sample dissolved in	: Mobile phase ※ 1 μg/mL = 1 ppm