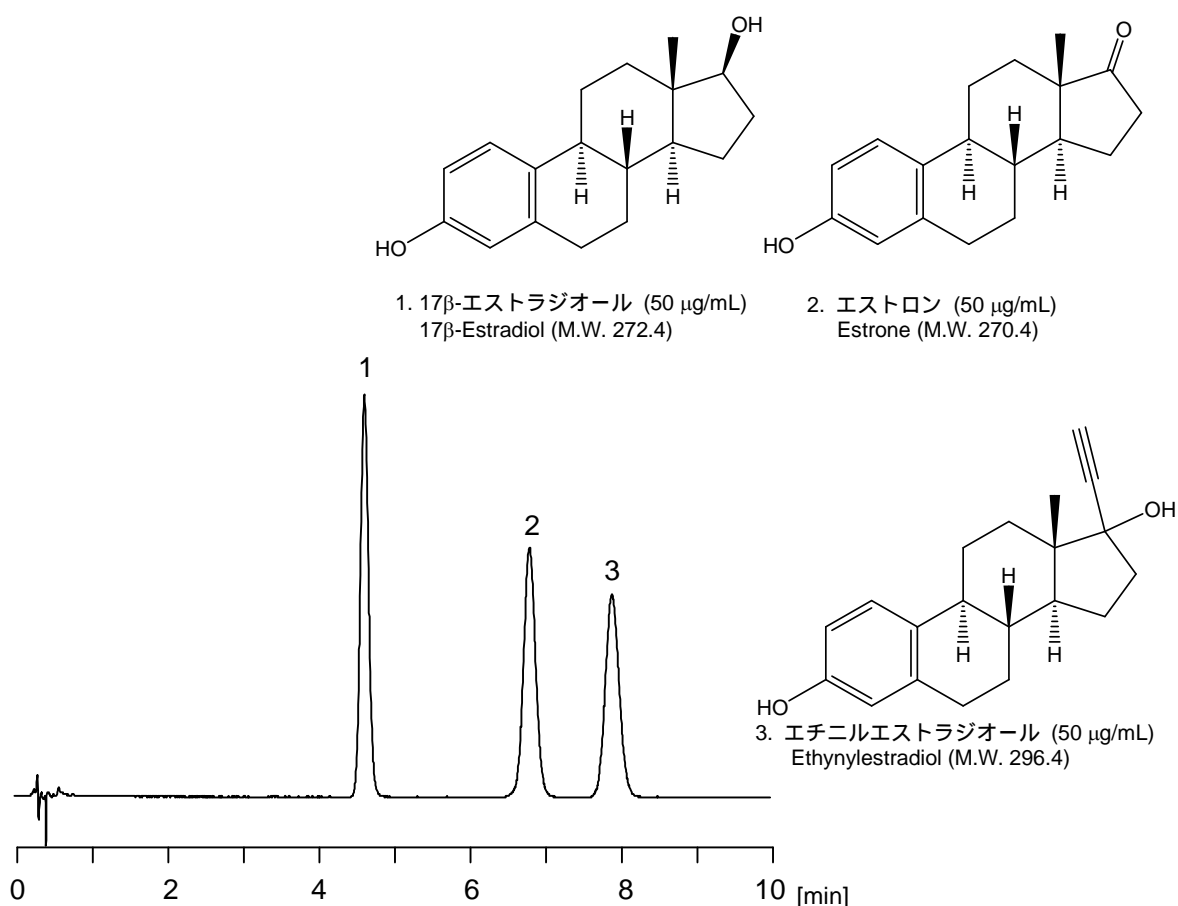


## 抗アンドロゲン薬と代謝物 Ethynylestradiol and its metabolites

抗アンドロゲン薬エチニルエストラジオールとその代謝物，エストラジオールとエストロンの分析例を示します．カラムは CAPCELL CORE ADME S2.7 ( 2.1 mm i.d. x 50 mm ) を用いました．良好なピーク形状で十分な分離が得られました．

Ethynylestradiol, or an anti-androgenic agent, and its two metabolites, estradiol and estrone, were analyzed with CAPCELL CORE ADME S2.7 (2.1 mm i.d. x 50 mm). The three compounds were adequately separated with good peak shapes.



### 【HPLC Conditions】

Column	: CAPCELL CORE ADME S2.7 ; 2.1 mm i.d. x 50 mm
Mobile phase	: H <sub>2</sub> O / CH <sub>3</sub> CN = 70 / 30
Flow rate	: 400 μL/min
Temperature	: 40 °C
Detection	: PDA 220 nm
Inj. vol.	: 3 μL
Sample dissolved in	: Each compound was dissolved in THF at 1 mg/mL. Equal volume of three solutions were mixed together, and then, diluted with H <sub>2</sub> O. 1 μg/mL = 1 ppm