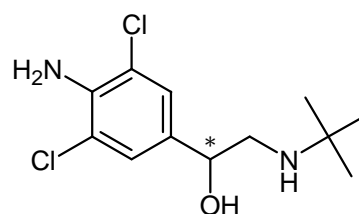
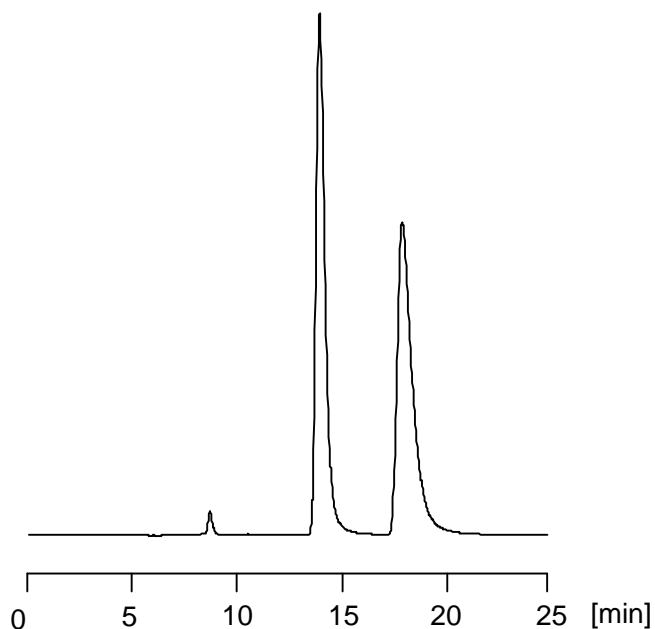


クレンブテロール

Clenbuterol

気管支喘息や気管支炎の治療薬,クレンブテロールの Chiral CD-Ph カラム (4.6 mm i.d. x 250 mm) を用いた光学分割例を紹介します .

The chromatogram below is a chiral separation of clenbuterol, or a drug used for treating bronchial asthma and bronchitis, with Chiral CD-Ph (4.6 mm i.d. x 250 mm).



1. クレンブテロール (800 $\mu\text{g}/\text{mL}$)
Clenbuterol (M.W. 277.2)

[HPLC Conditions]

Column	: Chiral CD-Ph ; 4.6 mm i.d. x 250 mm
Mobile phase	: 100 mmol/L NaClO ₄ / CH ₃ OH = 20 / 80
Flow rate	: 500 $\mu\text{L}/\text{min}$
Temperature	: 35 °C
Detection	: UV 300 nm
Inj. vol.	: 2 μL
Sample dissolved in	: CH ₃ OH
	1 $\mu\text{g}/\text{mL}$ = 1 ppm