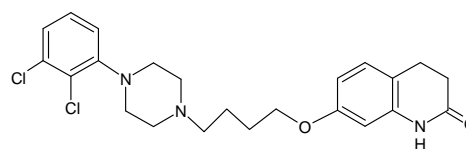
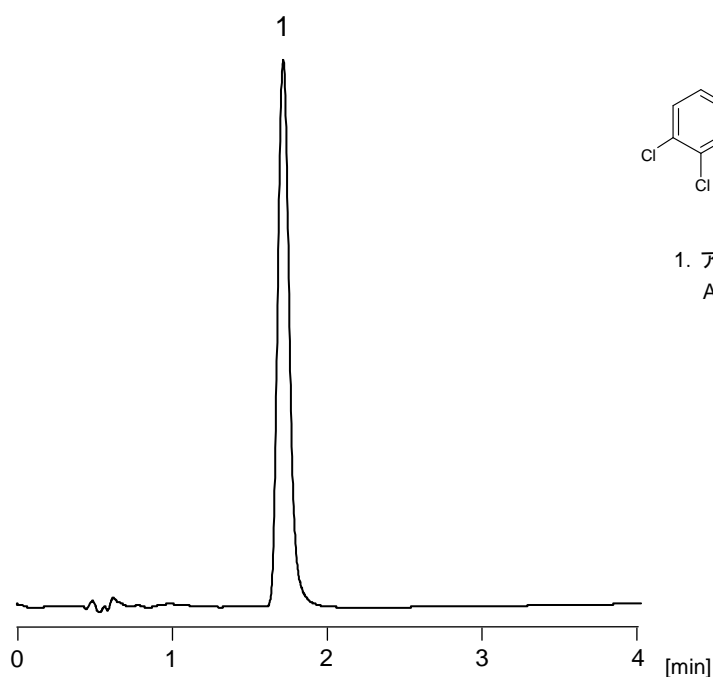


アリピプラゾール

Aripiprazole

アリピプラゾールは、抗ドーパミン作用と抗セロトニン作用をもつ非定型抗精神病剤で、統合失調症の治療に用いられます。CAPCELL CORE C₁₈ S2.7 (4.6 mm i.d. x 75 mm) を用いることにより、3分以内の短時間分析が可能です。

Aripiprazole is an antidopaminergic and antiserotonergic atypical antipsychotic. It's used to treat schizophrenia. The compound could be analyzed within three minutes, with CAPCELL CORE C₁₈ S2.7 (4.6 mm i.d. x 75 mm).



1. アリピプラゾール (100 µg/mL)
Aripiprazole (M.W. 448.4)

【HPLC Conditions】

Column	: CAPCELL CORE C ₁₈ S2.7 ; 4.6 mm i.d. x 75 mm
Mobile phase	: 10 mmol/L CH ₃ COONH ₄ / CH ₃ CN= 70 / 30
Flow rate	: 1.0 mL/min
Temperature	: 40 °C
Detection	: UV 254 nm
Inj. vol.	: 1 µL
Sample dissolved in	: Standard compound was dissolved in acetic acid / CH ₃ CN = 10 / 90 at 1000 µg/mL, and then, diluted with the mobile phase to 100 µg/mL.