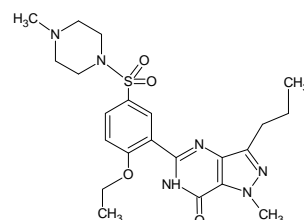
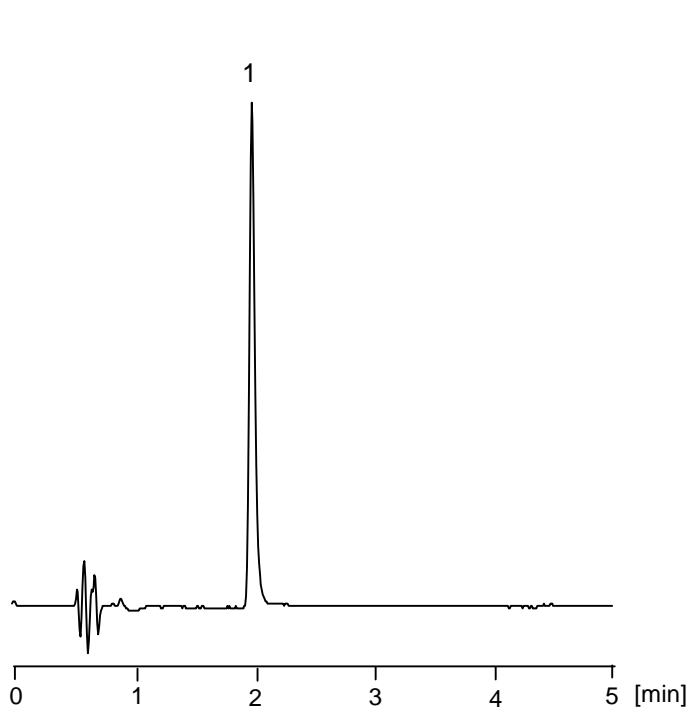


クエン酸シルデナフィル

Sildenafil citrate

シルデナフィルは勃起不全および肺動脈性肺高血圧症の治療薬であり、クエン酸塩の形態で経口にて投与されます。健康食品中に不法に添加されたシルデナフィルおよび類似成分の分析法もすでに報告されています。CAPCELL CORE C₁₈ S2.7 (4.6 mm i.d. x 75 mm) を用いることで、短時間分析が可能です。

Sildenafil is used for the treatment of erectile dysfunction and pulmonary arterial hypertension by oral administration in the form of its citrate. While a method to detect sildenafil and related compounds in illegally formulated food supplements has already been reported, the use of CAPCELL CORE C₁₈ S2.7 (4.6 mm i.d. x 75 mm) provides a rapid method to analyze the compound.



1. シルデナフィル (100 µg/mL)
Sildenafil (M.W. 474.6)

【HPLC Conditions】

Column	: CAPCELL CORE C ₁₈ S2.7 ; 4.6 mm i.d. x 75 mm
Mobile phase	: 20 mmol/L HCOONH ₄ , 0.2 vol% formic acid / CH ₃ CN = 70 / 30
Flow rate	: 1.0 mL/min
Temperature	: 40
Detection	: UV 290 nm
Inj.vol.	: 1 µL
Sample dissolved in	: Standard compound was dissolved in CH ₃ OH at 1000 µg/mL, and then, diluted with the mobile phase. (100 µg/mL as sildenafil citrate)