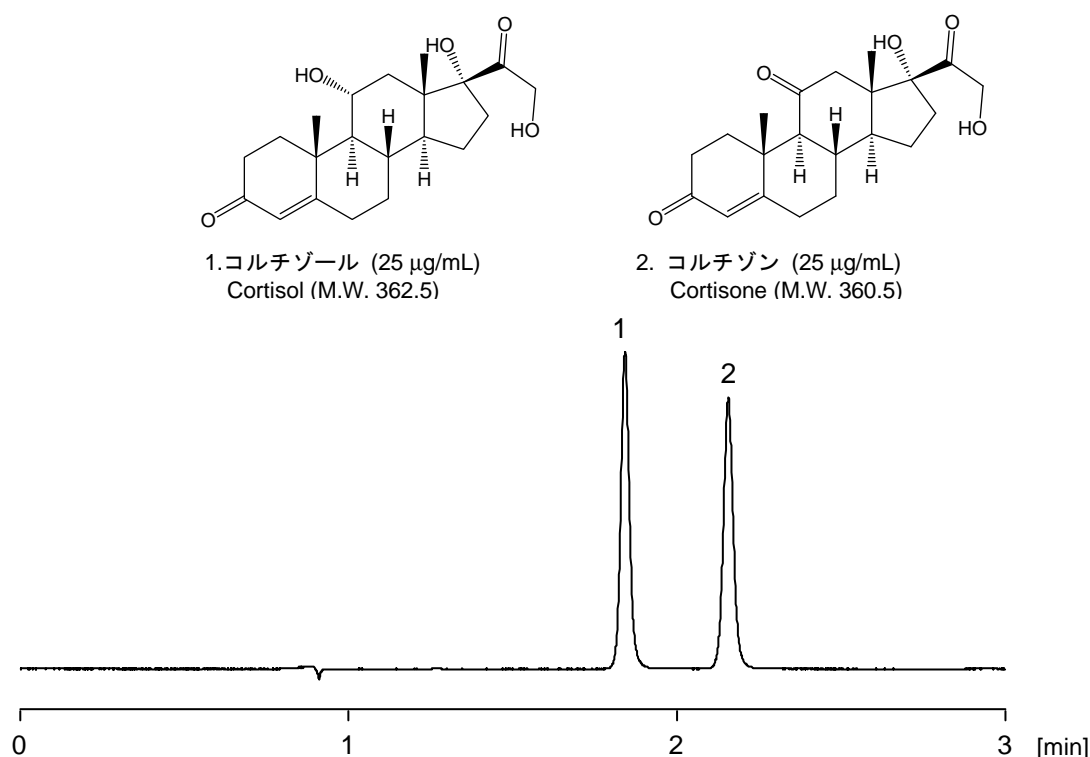


CAPCELL CORE PFP S2.7 (2.1 mm i.d. x 150 mm) を用いて、コルチゾールとコルチゾンの分析を、流速 400 $\mu\text{L}/\text{min}$ (通常の 2 倍) にて行いました。両物質は 3 分以内に良好に分離しました (圧力: 装置とカラムの分を含め最大 32.1 MPa)。

Cortisol and cortisone were separated with CAPCELL CORE PFP S2.7 (2.1 mm i.d. x 150 mm). Raising a linear velocity to twice the conventional one, the compounds were efficiently separated within three minutes (pressure: 32.1 MPa across the column and the instruments).

**【HPLC Conditions】**

Column : CAPCELL CORE PFP S2.7 ; 2.1 mm i.d. x 150 mm
Mobile phase : H_2O / CH_3CN = 70 / 30
Flow rate : 400 $\mu\text{L}/\text{min}$
Temperature : 40 $^\circ\text{C}$
Detection : UV 245 nm
Inj. vol. : 1 μL
Sample dissolved in : Each standard was dissolved in CH_3CN at 1 mg/mL. 25 μL of the two solutions were added together, and diluted to 1 mL with the H_2O .
※ 1 $\mu\text{g}/\text{mL}$ = 1 ppm