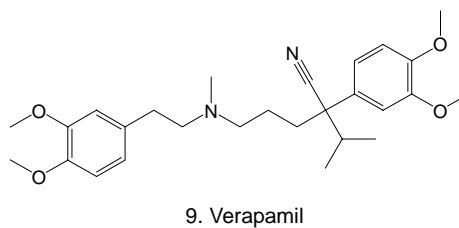
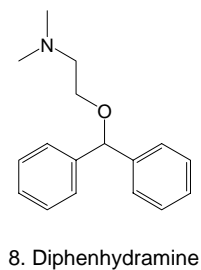
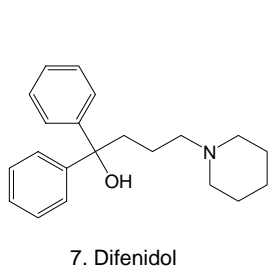
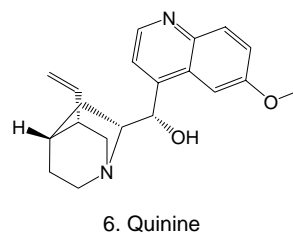
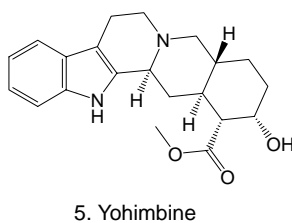
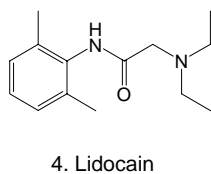
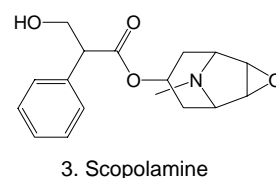
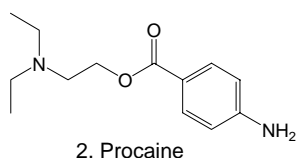
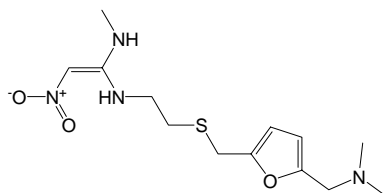
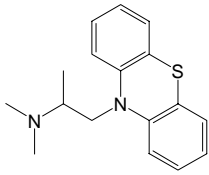


- | | |
|--|---|
| 1. ラニチジン (2 µg/mL)
Ranitidine (M.W. 314.4) | 10. プロメタジン (2 µg/mL)
Promethazine (M.W. 284.4) |
| 2. プロカイン (2 µg/mL)
Procaine (M.W. 236.3) | 11. ニカルジピン (2 µg/mL)
Nicardipine (M.W. 479.5) |
| 3. スコポラミン (2 µg/mL)
Scopolamine (M.W. 303.4) | 12. イミプラミン (2 µg/mL)
Imipramin (M.W. 280.4) |
| 4. リドカイン (2 µg/mL)
Lidocain (M.W. 234.3) | 13. アミトリプチリン (2 µg/mL)
Amitriptyline (M.W. 277.4) |
| 5. ヨヒンビン (2 µg/mL)
Yohimbine (M.W. 354.5) | 14. ジブカイン (2 µg/mL)
Dibucaine (M.W. 343.5) |
| 6. キニーネ (2 µg/mL)
Quinine (M.W. 324.4) | 15. クロロプロマジン (2 µg/mL)
Chlorpromazine (M.W. 318.9) |
| 7. ジフェニドール (2 µg/mL)
Difenidol (M.W. 309.5) | 16. クロムイブラミン (2 µg/mL)
Chlomipramin (M.W. 313.9) |
| 8. ジフェンヒドラミン (2 µg/mL)
Diphenhydramine (M.W. 255.4) | 17. ニフェジピン (2 µg/mL)
Nifedipine (M.W. 374.4) |
| 9. ベラパミル (2 µg/mL)
Verapamil (M.W. 454.6) | |

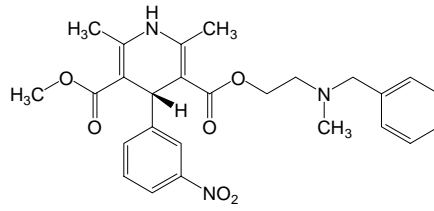
【HPLC Conditions】

Column	: CAPCELL PAK C ₁₈ MGIII S5 ; 2.0 mm i.d. x 250 mm
Mobile phase	: A) Formic acid was added to a solution (10 mmol/L HCOONH ₄) at 0.1 vol%. B) CH ₃ OH B 20% (0 min) -> 20% (3 min) -> 55% (3 min) -> 55% (25 min) -> 20% (25 min) Gradient
Flow rate	: 200 μL/min
Temperature	: 40 °C
Detection	: MS ESI Positive
Inj. vol.	: 2 μL
Sample dissolved in	: Methanol (2 μg/mL each) ※ 1 μg/mL = 1 ppm

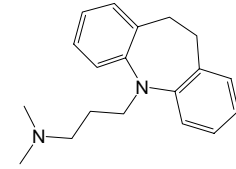




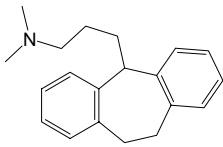
10. Promethazine



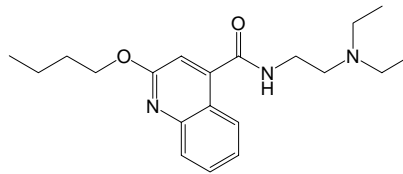
11. Nicardipine



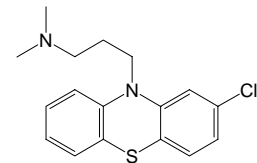
12. Imipramin



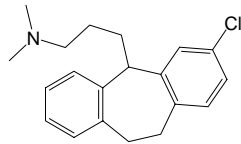
13. Amitriptyline



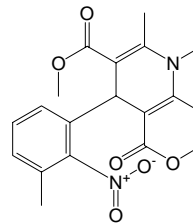
14. Dibucaine



15. Chlorpromazine



16. Chlomidamine



17. Nifedipine