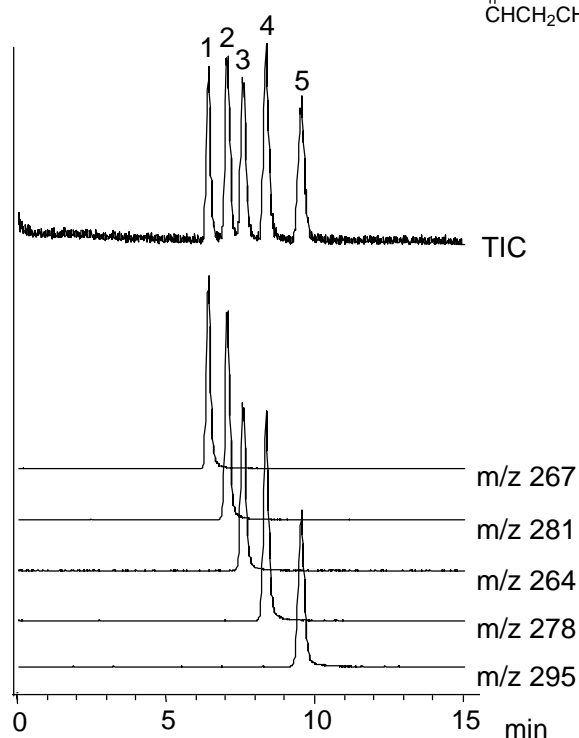
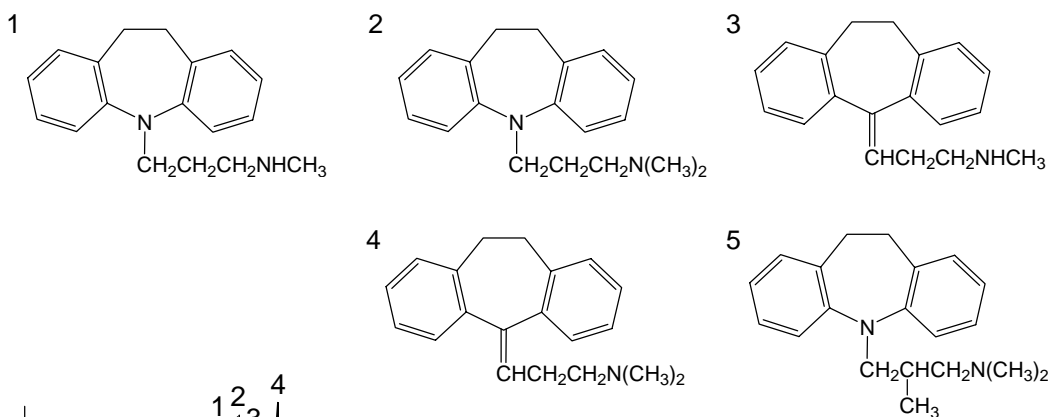


三環系抗うつ薬

Tricyclic antidepressants



1. デシプラミン (1 µg/mL)
Desipramine (M.W. 266.4)
2. イミプラミン (1 µg/mL)
Imipramine (M.W. 280.4)
3. ノルトリプチリン (1 µg/mL)
Nortriptyline (M.W. 263.4)
4. アミトリプチリン (1 µg/mL)
Amitriptyline (M.W. 277.4)
5. トリミプラミン (1 µg/mL)
Trimipramine (M.W. 294.3)

[HPLC Conditions]

Column : CAPCELL PAK C₁₈ MGIII S5 ; 2.0 mm i.d. x 150 mm

Mobile phase : (A) 0.1 vol % CH₃COOH, 10 mmol/L CH₃COONH₄
 (B) CH₃CN
 A / B = 70 / 30

Flow rate : 200 µL/min

Temperature : 40

Detection : MS ESI Positive

Inj. vol. : 1 µL

Sample dissolved in : All the compounds were separately dissolved in methanol at 1000 ppm. 100 µL of each solution was added together. The mixture was diluted 100 fold with the mobile phase (1 ppm each). 25 µL of formic acid was added to 500 µL of the diluted solution.

1 µg/mL = 1 ppm