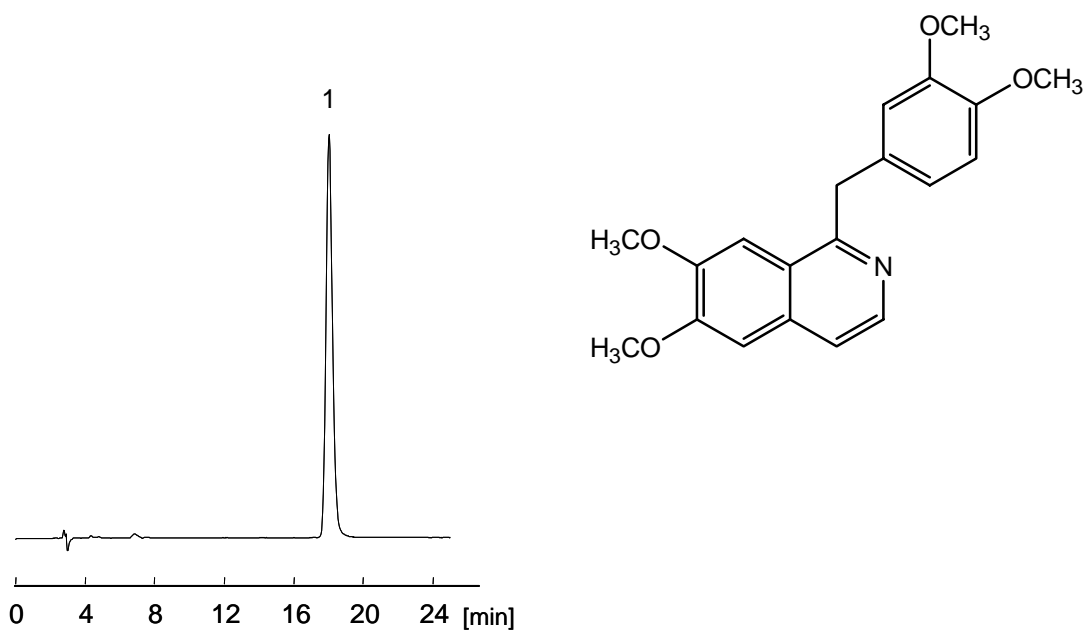


1. パパベリン (100 µg/mL)

Papaverine (M.W. 339.4)



【HPLC Conditions】

- Column : CAPCELL PAK C₁₈ UG120 S5 ; 1.5 mm i.d. x 250 mm
- Mobile phase : Sodium dodecyl sulfate was added to a solution (20 mmol/L KH₂PO₄ / CH₃CN = 60 / 40), at 5 mmol/L.
- Flow rate : 100 µL/min
- Temperature : 35 °C
- Detection : UV 235 nm
- Inj. vol. : 1 µL
- Sample dissolved in : Papaverine hydrochloride was dissolved at 1 mg/mL in methanol, and diluted to 100 µg/mL with the mobile phase.
- ※ 1 µg/mL = 1 ppm