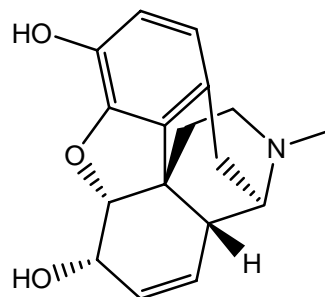
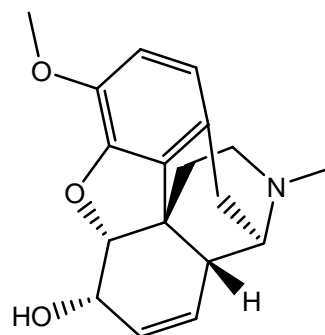


1. モルヒネ (50 µg/mL)
Morphine (M.W. 285.3)



2. コデイン (50 µg/mL)
Codeine (M.W. 299.4)



【HPLC Conditions】

Column	: CAPCELL PAK C ₁₈ UG120 S5 ; 1.5 mm i.d. x 250 mm
Mobile phase	: Sodium dodecyl sulfate was added to a solution (20 mmol/L KH ₂ PO ₄ / CH ₃ CN = 65 / 35), at 5 mmol/L.
Flow rate	: 100 µL/min
Temperature	: 35 °C
Detection	: UV 210 nm
Inj. vol.	: 1 µL
Sample dissolved in	: Both compounds were separately dissolved in methanol at 1 mg/mL. 50 µL of each solution was added together. The mobile phase was added to the mixture to make the total volume 1mL. ※ 1 µg/mL = 1 ppm