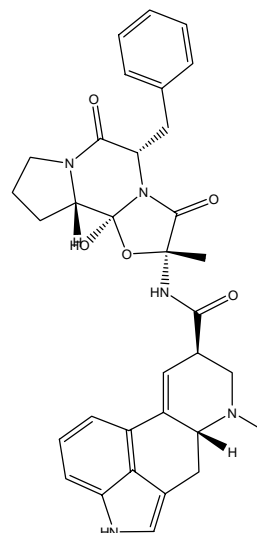
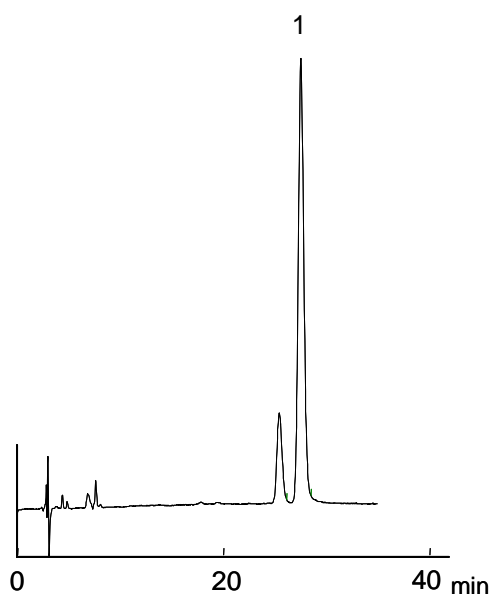


1. エルゴタミン (100 $\mu\text{g/mL}$)

Ergotamine (M.W. 581.7)



【HPLC Conditions】

- Column : CAPCELL PAK C₁₈ UG120 S5 ; 1.5 mm i.d. x 250 mm
Mobile phase : Sodium dodecyl sulfate was added to a solution (20 mmol/L KH₂PO₄ / CH₃CN = 60 / 40), at 5 mmol/L.
Flow rate : 100 $\mu\text{L/min}$
Temperature : 35 °C
Detection : UV 235 nm
Inj. vol. : 1 μL
Sample dissolved in : Ergotamine was dissolved at 1 mg/mL in methanol, and diluted to 100 $\mu\text{g/mL}$ with the mobile phase.
※ 1 $\mu\text{g/mL}$ = 1 ppm