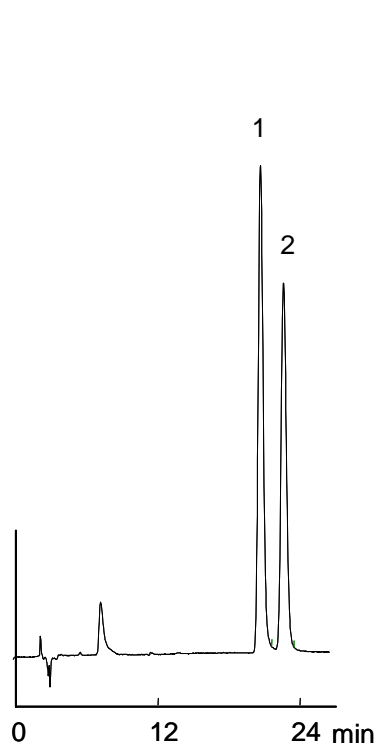
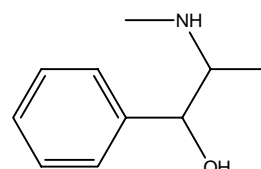


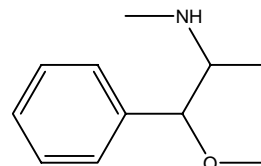
エフェドリン, メチルエフェドリン Ephedrine, Methylephedrine



1. エフェドリン (50 $\mu\text{g/mL}$)
Ephedrine (M.W. 165.2)



2. メチルエフェドリン (50 $\mu\text{g/mL}$)
Methylephedrine (M.W. 179.3)



【HPLC Conditions】

- Column : CAPCELL PAK C₁₈ UG120 S5 ; 1.5 mm i.d. x 250 mm
Mobile phase : Sodium dodecyl sulfate was added to a solution (20 mmol/L KH₂PO₄ / CH₃CN = 65 / 35), at 5 mmol/L.
Flow rate : 100 $\mu\text{L/min}$
Temperature : 35 $^{\circ}\text{C}$
Detection : UV 210 nm
Inj. vol. : 1 μL
Sample dissolved in : Both compounds were separately dissolved in methanol at 1 mg/mL. 50 μL of each solution was added together. The mobile phase was added to the mixture to make the total volume 1 mL.
※ 1 $\mu\text{g/mL}$ = 1 ppm