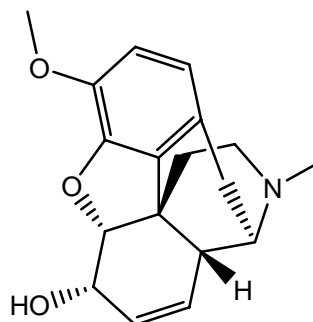
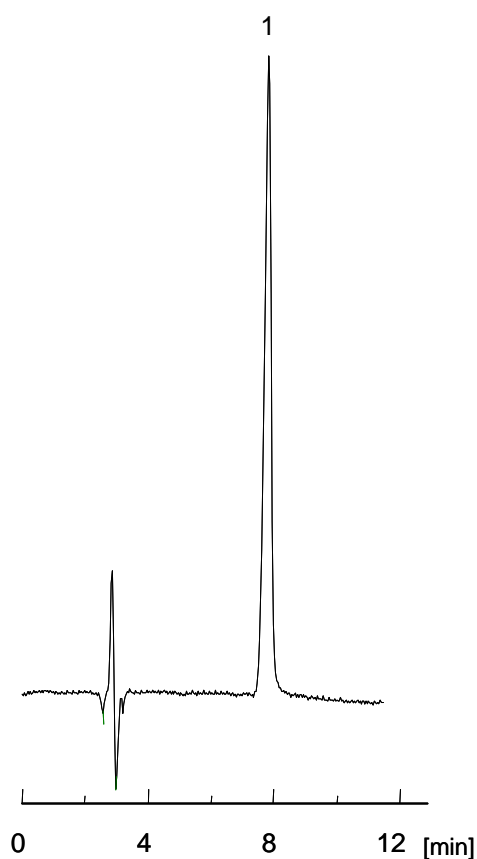


コデイン

Codeine

1. コデイン (10 µg/mL)
Codeine (M.W. 299.4)



【HPLC Conditions】

Column : CAPCELL PAK C₁₈ UG120 S5 ; 1.5 mm i.d. x 250 mm
 Mobile phase : Sodium dodecyl sulfate was added to a solution (20 mmol/L KH₂PO₄ / CH₃CN = 60 / 40), at 5 mmol/L.
 Flow rate : 100 µL/min
 Temperature : 35 °C
 Detection : UV 280 nm
 Inj. vol. : 1 µL
 Sample dissolved in : Codeine phosphate was dissolved at 1 mg/mL in methanol, and diluted to 10 µg/mL with the mobile phase.
 ※ 1 µg/mL = 1 ppm