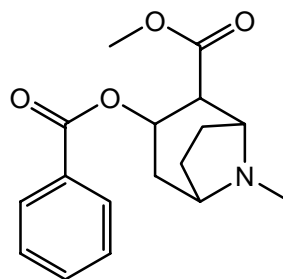


1. コカイン (100 $\mu\text{g/mL}$)
Cocaine (M.W. 303.4)



【HPLC Conditions】

- Column : CAPCELL PAK C₁₈ UG120 S5 ; 1.5 mm i.d. x 250 mm
- Mobile phase : Sodium dodecyl sulfate was added to a solution (20 mmol/L KH₂PO₄ / CH₃CN = 60 / 40), at 5 mmol/L.
- Flow rate : 100 $\mu\text{L/min}$
- Temperature : 35 °C
- Detection : UV 235 nm
- Inj. vol. : 1 μL
- Sample dissolved in : Cocaine was dissolved at 1 mg/mL in methanol, and diluted to 100 $\mu\text{g/mL}$ with the mobile phase.
※ 1 $\mu\text{g/mL}$ = 1 ppm