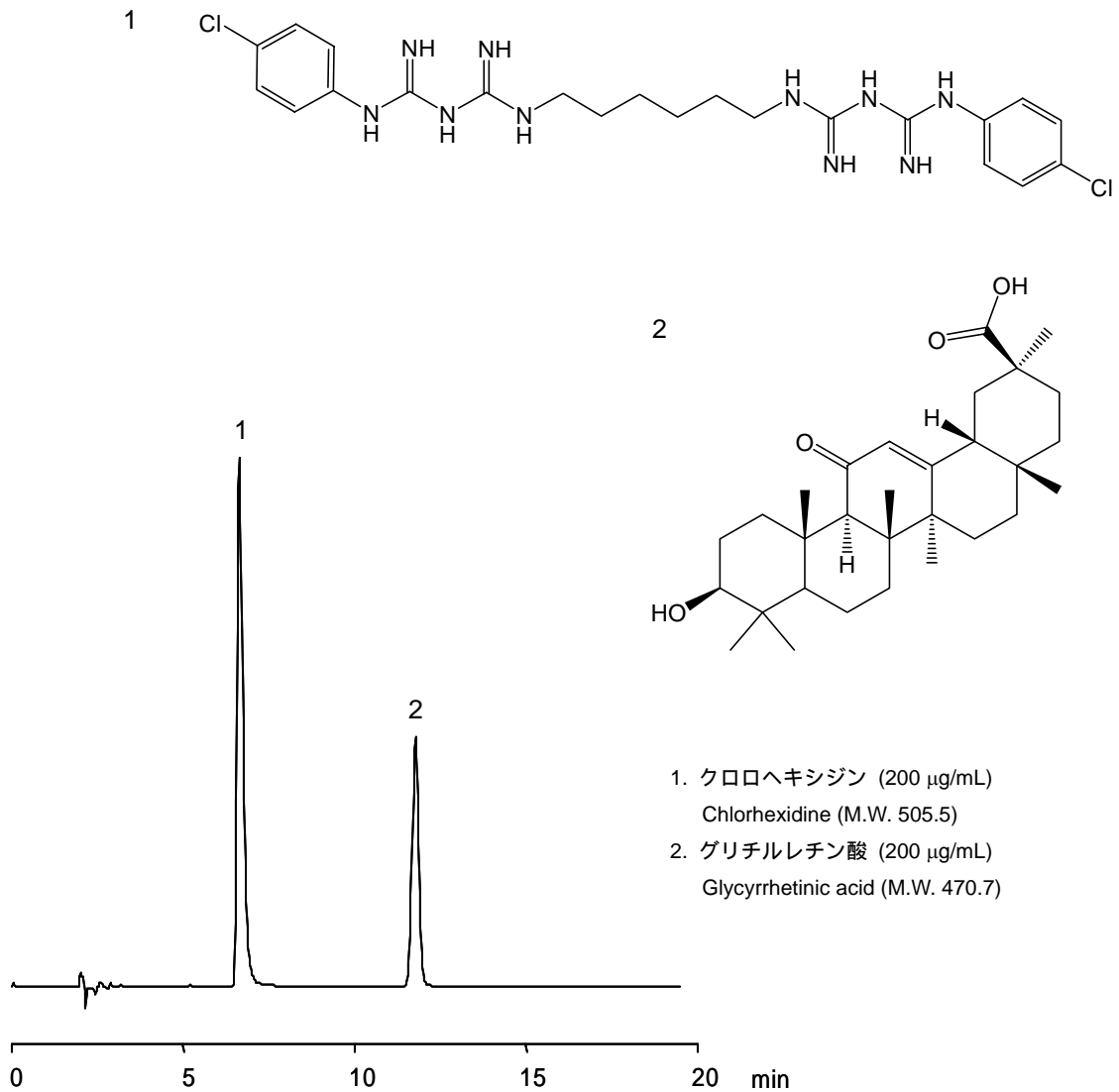


クロロヘキシジン ,グリチルレチン酸 Chlorhexidine, Glycyrrhetic acid



[HPLC Conditions]

Column : CAPCELL PAK C₁₈ MGII S5 ; 2.0 mm i.d. x 250 mm
Mobile phase : 10 mmol/L Sodium dodecylsulfate (adjusted at pH 1.9 with phosphoric acid) / CH₃CN = 30 / 70
Flow rate : 200 µL/min
Temperature : 40
Detection : UV 248 nm
Inj. Vol. : 2 µL
Sample dissolved in : CH₃OH
1 µg/mL = 1 ppm