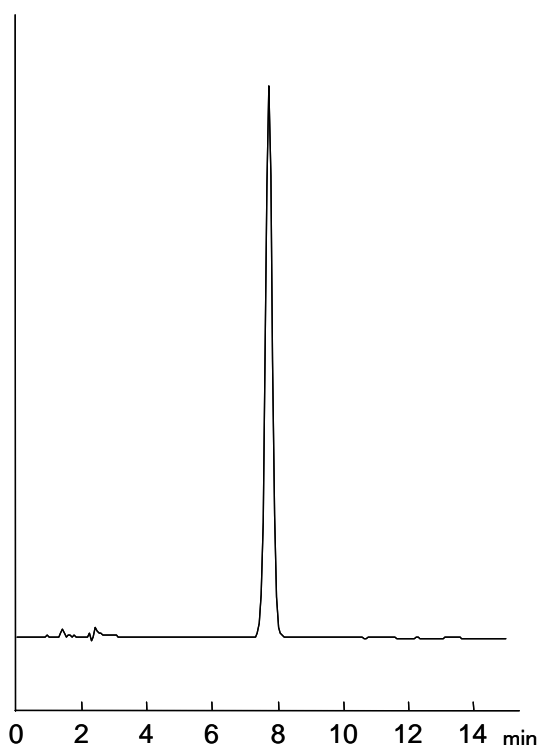


## セフジニル

## Cefdinir

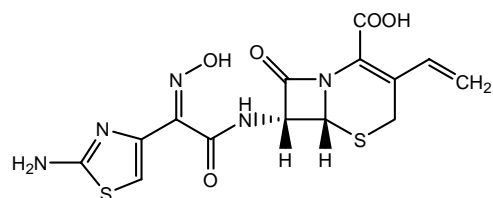
セフジニルの局方におけるカラムの選定条件は、理論段数及びシンメトリー係数はそれぞれ2000段以上、1.5以下と定められています。CAPCELL PAK C<sub>18</sub> MGII S5は理論段数6070、シンメトリー係数0.98で適合しています。

The Japanese Pharmacopoeia (15<sup>th</sup> ed.) requires a peak of cefdinir to show a number of theoretical plates of 2000 or greater and a symmetry factor of 1.5 or smaller. The chromatogram below shows 6070 and 0.98 for these parameters, respectively.



1.セフジニル (200 µg/mL)

Cefdinir (M.W. 395.4)



### 【HPLC Conditions】

- Column : CAPCELL PAK C<sub>18</sub> MGII S5 ; 4.6 mm i.d. x 150 mm  
Mobile phase : 5 mL of tetramethylammonium hydroxide (10% aqueous solution) was diluted with 495 mL of water, and adjusted at pH 5.5 with phosphoric acid. 0.2 mL of EDTA-2Na (0.1 mol/L) was added to the solution. 450 mL of the solution, 30 mL of acetonitrile, and 20 mL of methanol were mixed together.  
Flow rate : 0.9 mL/min  
Temperature : 40 °C  
Detection : UV 254 nm  
Inj. vol. : 5 µL  
Sample dissolved in : 100 mmol/L Phosphate buffer (KH<sub>2</sub>PO<sub>4</sub>:Na<sub>2</sub>HPO<sub>4</sub> = 1:1 in molar ratio)  
※ 1 µg/mL = 1 ppm