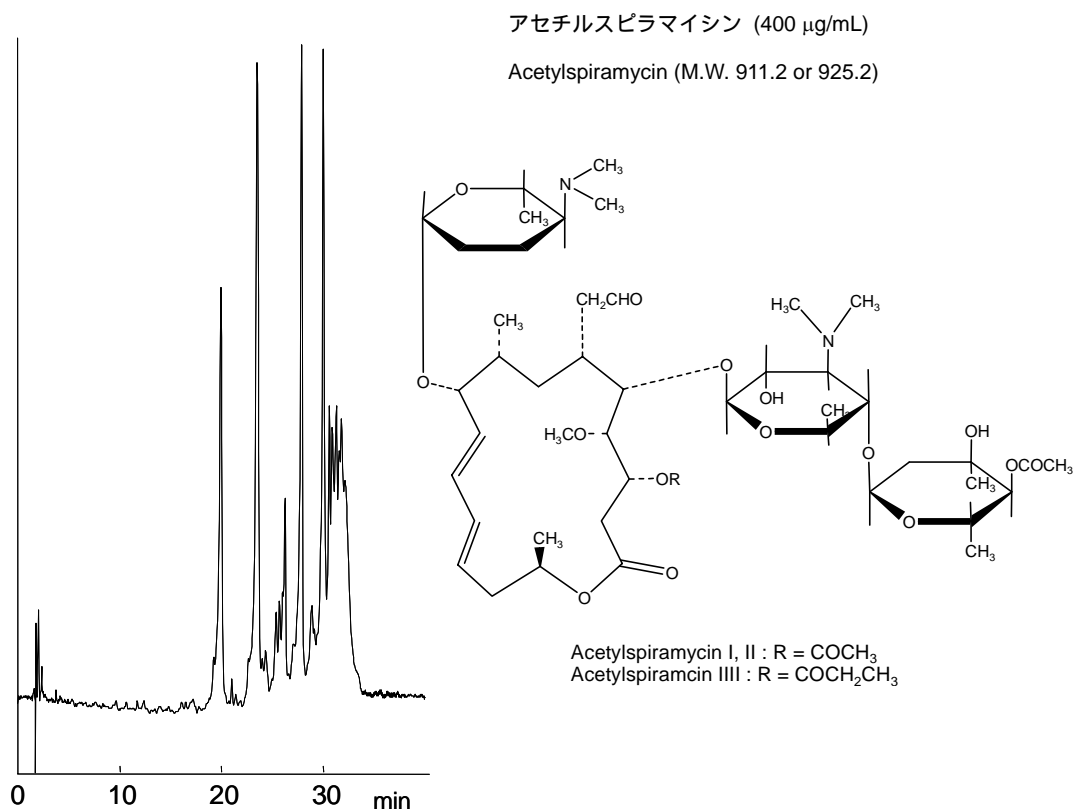


アセチルスピラマイシン

Acetylspiramycin



【HPLC Conditions】

Column	: CAPCELL PAK C ₈ DD S5 ; 4.6 mm i.d. x 150 mm
Mobile phase	: A) 1 mol/L Phosphate buffer (KH ₂ PO ₄ : K ₂ HPO ₄ = 1 : 1 in molar ratio) / H ₂ O / CH ₃ CN = 12.5 / 687.5 / 150 B) 1 mol/L Phosphate buffer (KH ₂ PO ₄ : K ₂ HPO ₄ = 1 : 1 in molar ratio) / H ₂ O / CH ₃ CN = 12.5 / 237.5 / 600 B 20 % (0.0 min) -> 80 % (30.0 min) -> 20 % (31.0 min) -> 20 % (41.0 min) Gradient
Flow rate	: 1 mL/min
Temperature	: 50 °C
Detection	: UV 231 nm
Inj. vol.	: 5 µL
Sample dissolved in	: Acetylspiramycin (4 mg) was dissolved in methanol (2.5 mL), and then, mobile phase A (7.5 mL) was added to the solution. ※ 1 µg/mL = 1 ppm