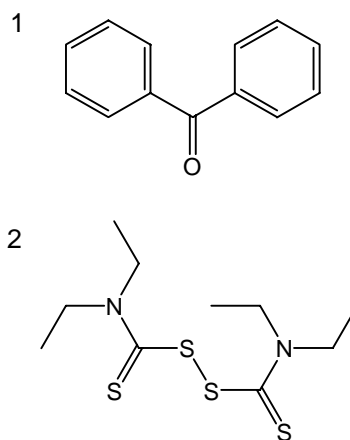
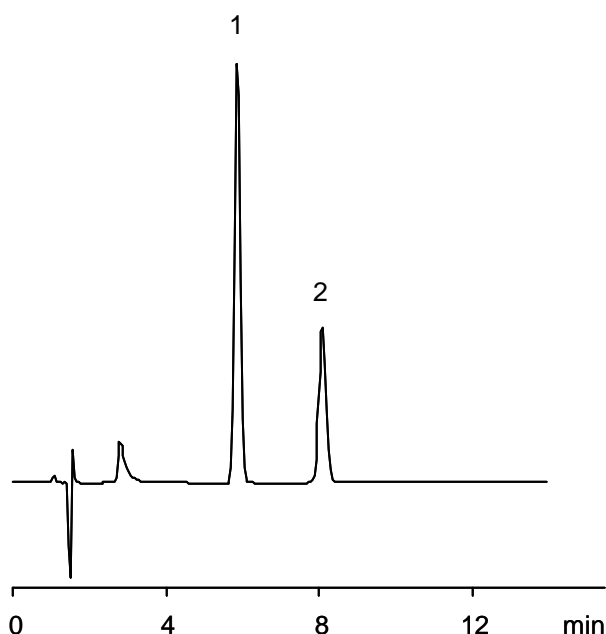


## ジスルフィラム

## Disulfiram

日本薬局方におけるカラム選定条件は、「ベンゾフェノン，ジスルフィラムの順に溶出し，その分離度が4以上あるものを用いる」と定められています．CAPCELL PAK C<sub>18</sub> MGIIでは，分離度が7.5と良好な分離が得られました．

The Japanese Pharmacopoeia requires a column to elute compounds in the order of benzophenone and disulfiram, with a resolution value of 4 or greater between the two compounds. CAPCELL PAK C<sub>18</sub> MGII showed a resolution of 7.5.



1. ベンゾフェノン (10 µg/mL)  
Benzophenone (M.W. 182.2)
2. ジスルフィラム (10 µg/mL)  
Disulfiram (M.W. 296.5)

### 【HPLC Conditions】

Column	: CAPCELL PAK C <sub>18</sub> MGII S5 ; 4.6 mm i.d. x 150 mm
Mobile phase	: H <sub>2</sub> O / CH <sub>3</sub> OH = 3 / 7
Flow rate	: 1 mL/min
Temperature	: 25 °C
Detection	: UV 210 nm
Inj. vol.	: 10 µL
Sample dissolved in	: 5 mg of each compound was dissolved together in 4 mL of methanol. 1 mL of water was added to the solution. The solution was diluted 100-fold with the mobile phase and introduced to HPLC.

※ 1 µg/mL = 1 ppm