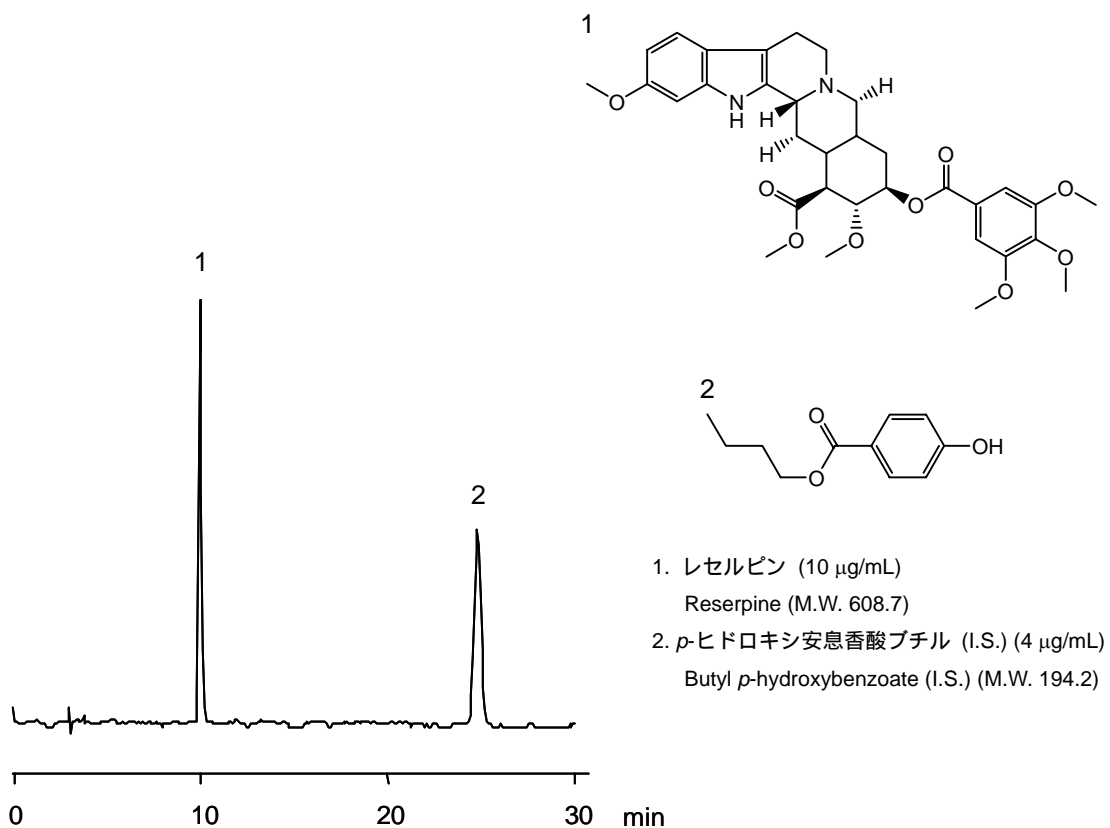


## レセルピン

## Reserpine

日本薬局方におけるカラム選定条件は、「レセルピン，内標準物質の順に溶出し，その分離度が2以上あるものを用いる」と定められています．CAPCELL PAK C<sub>18</sub> MGII では，分離度が31.0と良好な分離が得られました．

The Japanese Pharmacopoeia requires a column to elute compounds in the order of reserpine and its internal standard, with a resolution value of 2 or greater between the two compounds. CAPCELL PAK C<sub>18</sub> MGII showed a resolution of 31.0.



### 【HPLC Conditions】

Column	: CAPCELL PAK C <sub>18</sub> MGII S5 ; 4.6 mm i.d. x 250 mm
Mobile phase	: 50 mmol/L KH <sub>2</sub> PO <sub>4</sub> (adjusted at pH 3.0 with phosphoric acid) / CH <sub>3</sub> CN = 55 / 45
Flow rate	: 0.6 mL/min
Temperature	: 40 °C
Detection	: UV 268 nm
Inj. vol.	: 20 µL
Sample dissolved in	: CH <sub>3</sub> CN
	※ 1 µg/mL = 1 ppm