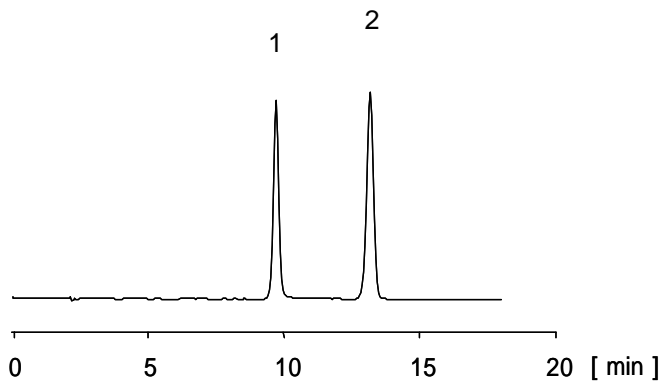


## プロカイン

## Procaine

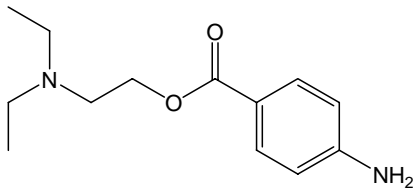
日本薬局方におけるカラム選定条件は、「プロカイン，内標準物質の順に溶出し，その分離度が8以上あるものを用いる」と定められています．CAPCELL PAK C<sub>18</sub> MGII では，分離度が8.7でした．

The Japanese Pharmacopoeia requires a column for procaine to elute compounds in the order of procaine and its internal standard, with a resolution value of 8 or greater between the two compounds. CAPCELL PAK C<sub>18</sub> MGII showed a resolution of 8.7.

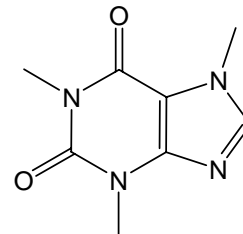


1. プロカイン (250 µg/mL)  
Procaine (M.W. 236.3)

2. カフェイン (I.S.) (250 µg/mL)  
Caffeine (I.S.) (M.W. 194.2)



1. Procaine



2. Caffeine

### [HPLC Conditions]

Column : CAPCELL PAK C<sub>18</sub> MGII S5 ; 4.6 mm i.d. x 150 mm  
Mobile phase : {0.1w/v% Sodium 1-pentanesulfonate, 50 mmol/L KH<sub>2</sub>PO<sub>4</sub> (pH 3.0, H<sub>3</sub>PO<sub>4</sub>)} / CH<sub>3</sub>OH = 80 / 20  
Flow rate : 0.7 mL/min  
Temperature : 40 °C  
Detection : UV 254 nm  
Inj. vol. : 5µL  
Sample dissolved in : Mobile phase (250 µg/mL as procaine hydrochloride)  
1 µg/mL = 1 ppm