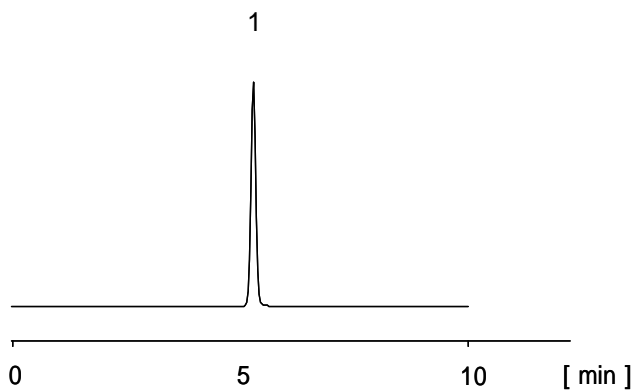
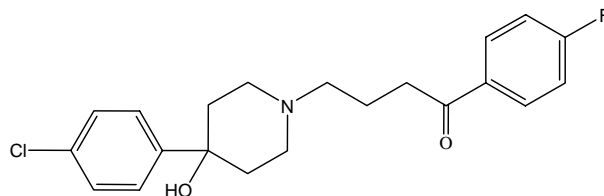


ハロペリドール

Haloperidol



1. ハロペリドール (25  $\mu\text{g/mL}$ )  
Haloperidol (M.W. 375.9)

**[HPLC Conditions]**

Column : CAPCELL PAK C<sub>18</sub> MGII S5 ; 4.6 mm i.d. x 150 mm  
Mobile phase : 25 mmol/L Phosphate buffer (KH<sub>2</sub>PO<sub>4</sub>:Na<sub>2</sub>HPO<sub>4</sub> = 1:1 in molar ratio) / CH<sub>3</sub>CN = 40 / 60  
Flow rate : 1 mL/min  
Temperature : 40 °C  
Detection : UV 230 nm  
Inj. vol. : 5  $\mu\text{L}$   
Sample dissolved in : Mobile phase  
1  $\mu\text{g/mL}$  = 1 ppm