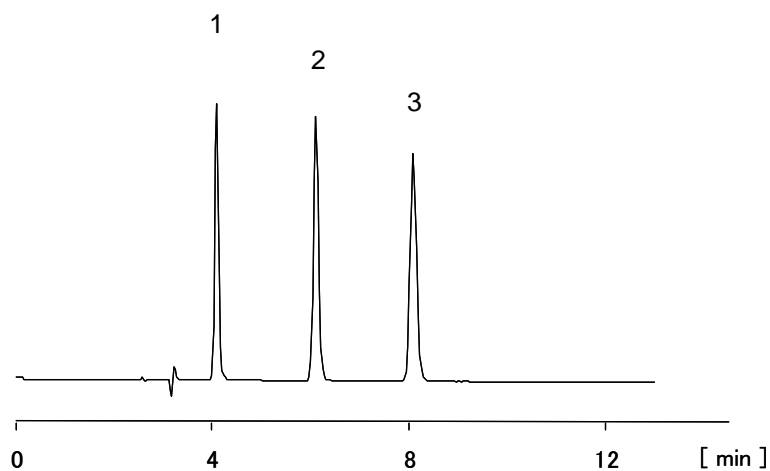


キサンチン誘導体

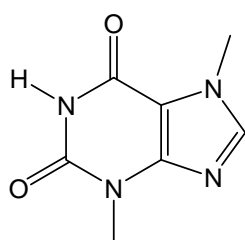
Xanthine derivatives



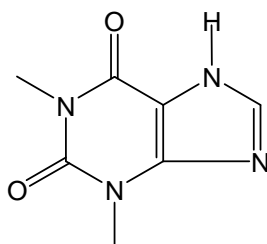
1. テオブロミン (50 µg/mL)
Theobromine (M.W. 180.2)

2. テオフィリン (50 µg/mL)
Theophylline (M.W. 180.2)

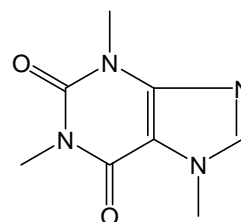
3. カフェイン (50 µg/mL)
Caffeine (M.W. 194.2)



1. Theobromine



2. Theophylline



3. Caffeine

【HPLC Conditions】

Column : CAPCELL PAK C₁₈ MGII S5 ; 4.6 mm i.d. x 250 mm
 Mobile phase : H₂O / CH₃OH = 70 / 30
 Flow rate : 1 mL/min
 Temperature : 30 °C
 Detection : UV 254 nm
 Inj. vol. : 1 µL
 Sample dissolved in : Mobile phase
 ※ 1 µg/mL = 1 ppm